



Cambridge International Examinations
Cambridge International General Certificate of Secondary Education

CANDIDATE
NAME

CENTRE
NUMBER

--	--	--	--	--	--

CANDIDATE
NUMBER

--	--	--	--	--



BANGLADESH STUDIES

0449/02

Paper 2 Environment and Development of Bangladesh

May/June 2018

1 hour 30 minutes

Candidates answer on the Question Paper.

Additional Materials: Insert

READ THESE INSTRUCTIONS FIRST

Write your Centre number, candidate number and name in the boxes above.

Write in dark blue or black pen.

You may use an HB pencil for any sketch maps, diagrams or graphs.

Do not use staples, paper clips, glue or correction fluid.

DO **NOT** WRITE IN ANY BARCODES.

Write your answer to each question in the space provided.

If additional space is required, you should use the lined page at the end of this booklet. The question number(s) must be clearly shown.

Answer **three** questions.

You are advised to spend about 30 minutes on each question.

The number of marks is given in brackets [] at the end of each question or part question.

The Insert contains Fig. 4.2 for Question 4(b) and Fig. 5.1 for Question 5(a).

The Insert is **not** required by the Examiner.

This document consists of **20** printed pages and **1** Insert.

Answer **three** questions.

1 (a) Study Fig. 1.1, a map of Bangladesh.

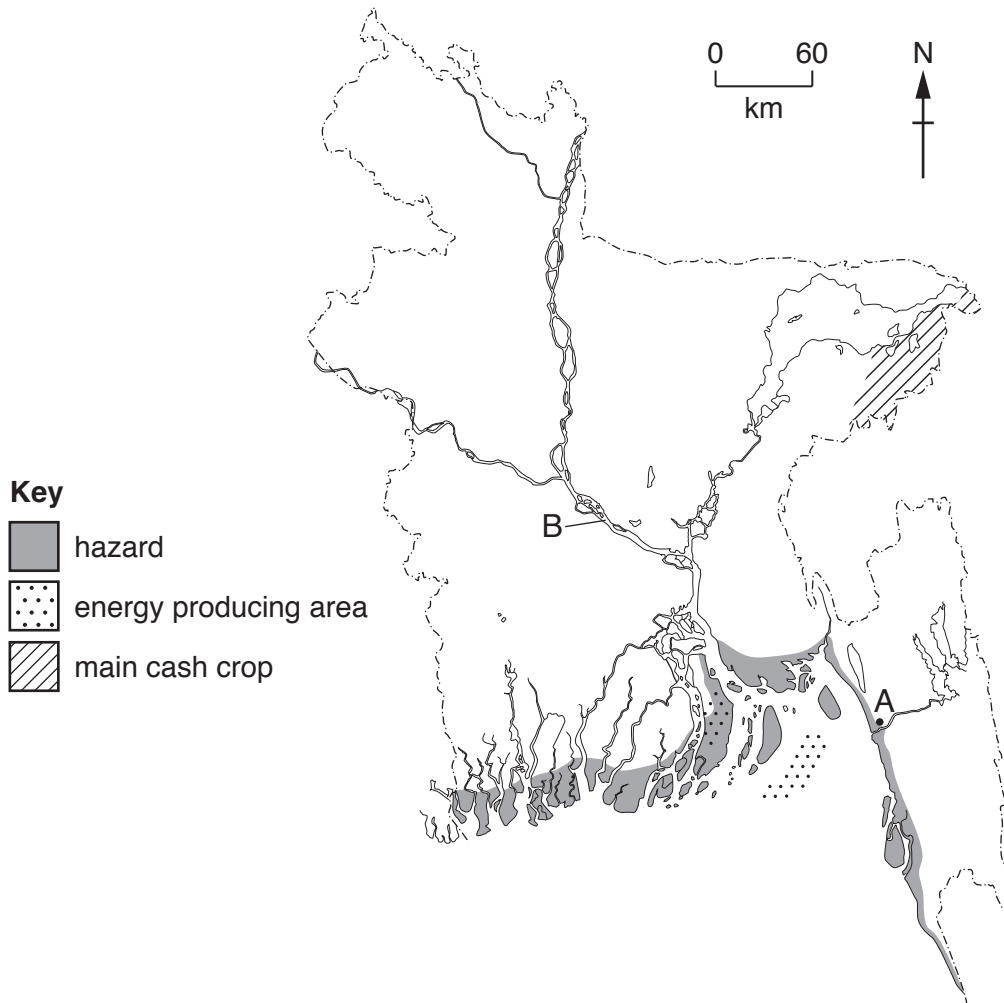


Fig. 1.1

Name the following features:

- (i) city A;
.....[1]
- (ii) river B;
.....[1]
- (iii) the hazard shown on the map;
.....[1]
- (iv) the energy source shown on the map;
.....[1]
- (v) the main cash crop shown on the map.
.....[1]

(b) Study Figs. 1.2 and 1.3, which show how vegetation and valley side steepness can affect a river's discharge after heavy rainfall.

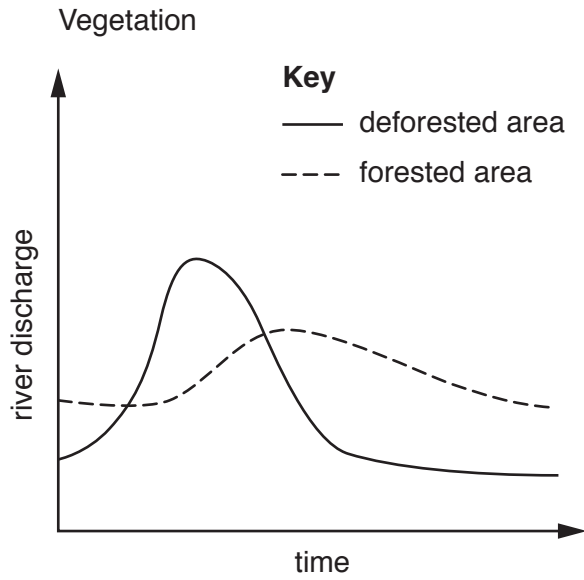


Fig. 1.2

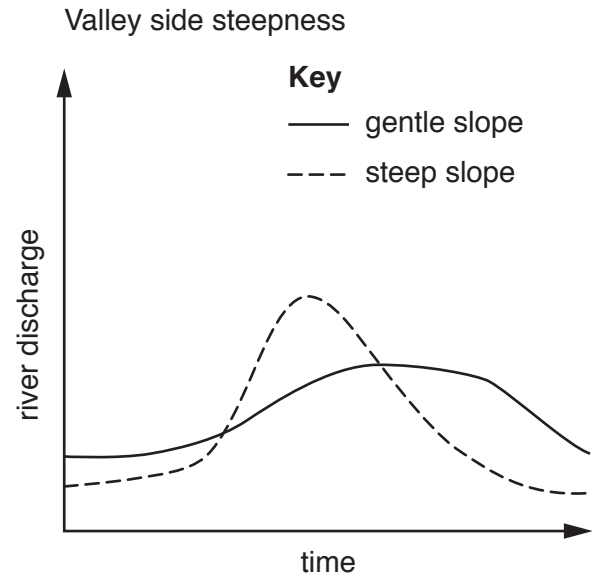


Fig. 1.3

(i) In Fig. 1.2, which area causes the highest river discharge?

.....[1]

(ii) In Fig. 1.3, which slope causes the highest river discharge?

.....[1]

(iii) How does the river discharge of a valley with steep sides differ from a valley with gentle sides?

.....

[2]

(d) There are many differing opinions about how to deal with flooding in Bangladesh. Below are two different views.

We need more food aid and water purification tablets now.

local resident

Longer term plans such as new dams and more flood warnings are important.

government official

(i) Give **one** piece of evidence in support of the local resident.

.....
.....[1]

(ii) Give **one** piece of evidence in support of the government official.

.....
.....[1]

(iii) Which opinion do you agree with the most? Give reasons for your answer.

.....
.....
.....
.....
.....
.....
.....[3]

[Total: 25]

- 2 (a) Study Fig. 2.1, which is an article on hydro-electric power.

Bangladesh to invest in Bhutan's hydro-electric power project

18 May 2016

Bangladesh is to invest with India in a hydro-electric project in Bhutan. Bangladesh's economic affairs minister said 'We have been dreaming of importing power from Bhutan for a long time. The fact that demand for power in both Bangladesh and India will keep increasing presents a big economic opportunity for Bhutan.' This project will also strengthen the relationship between the three countries. Bangladesh aims to become a middle income country and will need to import power from Bhutan to meet the growing energy demand.

Fig. 2.1

- (i) Using Fig. 2.1, describe **two** advantages for Bangladesh of investing in the hydro-electric power project.

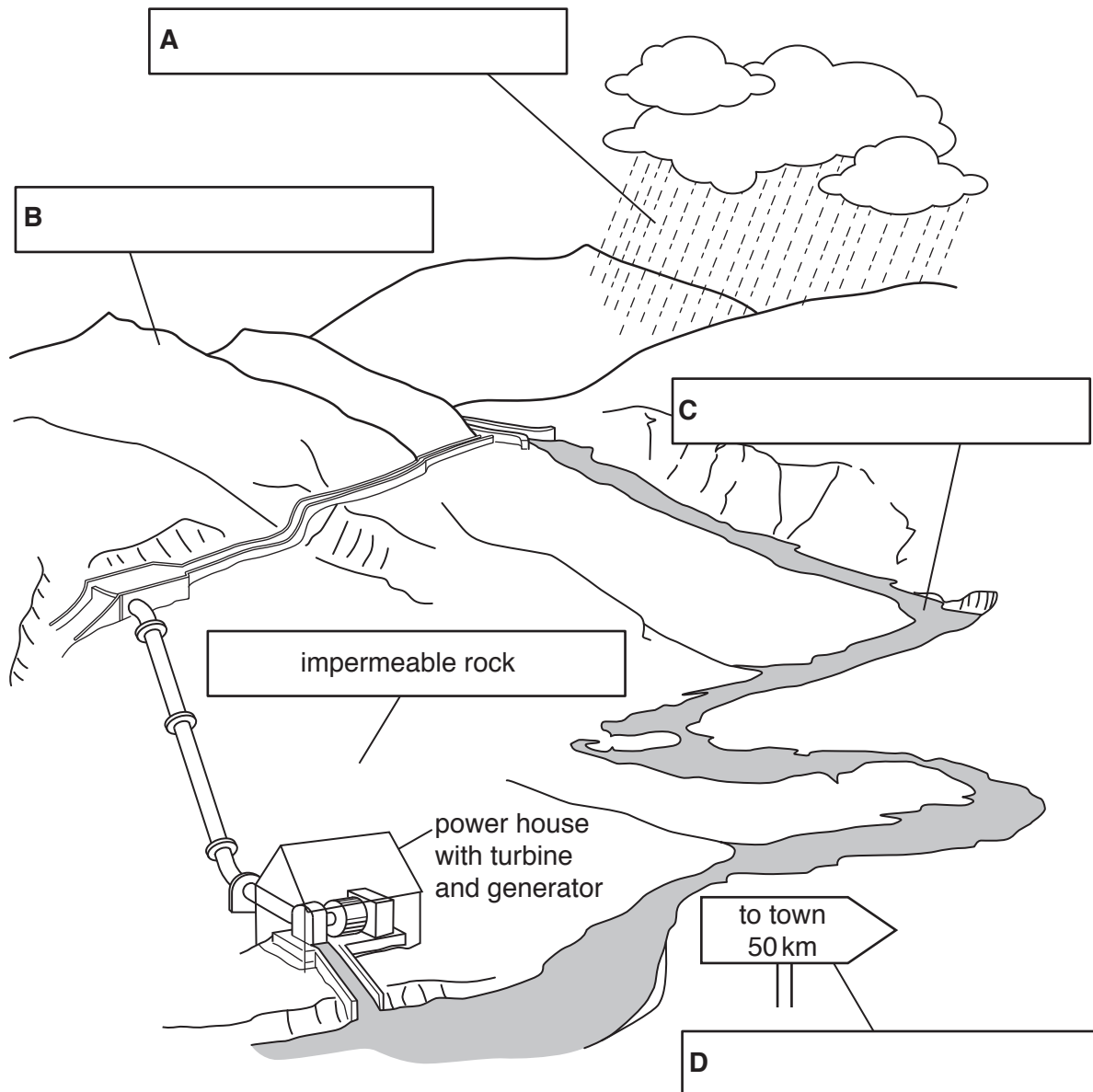
.....

.....

.....

.....[2]

(ii) Label the diagram to show the physical factors required by the hydro-electric power station.



[4]

(b) The main energy used in rural industries and homes in Bangladesh is biomass.

(i) Name **two** sources of biomass.

.....

.....

.....

.....[2]

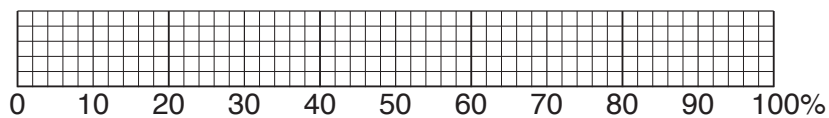
(ii) What are the **disadvantages** of using biomass in rural areas?

.....
.....
.....
.....
.....
.....
.....[3]

(c) (i) What is sustainable development?

.....
.....[1]

(ii) Study Fig. 2.2, which shows sources of water in urban areas in Bangladesh.



Key

source of water:




-  tube wells
-  piped inside dwelling
-  piped outside dwelling

Fig. 2.2

On Fig. 2.2, complete the graph using the following figures:

- tube wells – 68%
 - piped inside dwelling – 24%
 - piped outside dwelling – 8%
- [2]

(iii) Describe **two** domestic uses of water.

.....
.....
.....
.....[2]

(iv) Explain **two** ways in which Bangladesh has improved its domestic water supply.

.....
.....
.....
.....
.....
.....
.....
.....
.....
.....[4]

(d) Study the two statements below.

- A 'Providing clean water for everybody remains the main priority for Bangladesh.'
- B 'Continuing to control air quality remains the main priority for Bangladesh.'

(i) Give **one** piece of evidence which supports statement A.

.....
.....[1]

(ii) Give **one** piece of evidence which supports statement B.

.....
.....[1]

(iii) Which opinion do you agree with the most? Give reasons for your answer.

.....
.....
.....
.....
.....
.....
.....
.....[3]

[Total: 25]

4 (a) Study Fig. 4.1, which shows a statement about agricultural productivity in Bangladesh.

‘Bangladesh has raised agricultural productivity significantly in the last few decades. It is remarkable that, with so many people and so little arable land, the country has been able to provide sufficient food for almost everyone,’ said Qimiao Fan, World Bank Country Director for Bangladesh, Bhutan and Nepal. ‘While rice will remain its focus, Bangladesh needs to find effective ways to diversify its agriculture, as well as adapt to a changing climate.’

Fig. 4.1

(i) Using Fig. 4.1 only, describe **two** challenges faced by agriculture in Bangladesh.

.....
.....
.....
.....[2]

(ii) Describe the growing conditions required by rice.

.....
.....
.....
.....
.....
.....[3]

(c) In the south of Bangladesh waterways are the main type of transport. What are the advantages and disadvantages of using waterways for transport?

advantages

.....

.....

.....

disadvantages

.....

.....

.....[4]

(d) Study the two statements below.

A 'Continuing to increase crop yield and type of crop (diversity) is key to the future economic development of Bangladesh.'

B 'Protecting the environment is key when developing Bangladesh's agriculture.'

(i) Give **one** piece of evidence which supports statement A.

.....

.....[1]

(ii) Give **one** piece of evidence which supports statement B.

.....

.....[1]

(iii) Which opinion do you agree with the most? Give reasons for your answer.

.....

.....

.....

.....

.....

.....[3]

[Total: 25]

(d) Study the two statements below.

A ‘Supporting cottage industries and small-scale industries is key to further reducing poverty in Bangladesh.’

B ‘Improving roads and electricity provision in rural areas is key to further reducing poverty in Bangladesh.’

(i) Give **one** piece of evidence which supports statement A.

.....
.....[1]

(ii) Give **one** piece of evidence which supports statement B.

.....
.....[1]

(iii) Which opinion do you agree with the most? Give reasons for your answer.

.....
.....
.....
.....
.....
.....
.....[3]

[Total: 25]

