



UNIVERSITY OF CAMBRIDGE INTERNATIONAL EXAMINATIONS  
International General Certificate of Secondary Education

CANDIDATE  
NAME

CENTRE  
NUMBER

--	--	--	--	--

CANDIDATE  
NUMBER

--	--	--	--



**COMPUTER STUDIES**

**0420/13**

Paper 1

**October/November 2011**

**2 hours 30 minutes**

Candidates answer on the Question Paper.

No Additional Materials are required.

**READ THESE INSTRUCTIONS FIRST**

Write your Centre number, candidate number and name on all the work you hand in.

Write in dark blue or black pen.

You may use a soft pencil for any diagrams, graphs or rough working.

Do not use staples, paper clips, highlighters, glue or correction fluid.

**DO NOT WRITE IN ANY BARCODES.**

Answer **all** questions.

No marks will be awarded for using brand names of software packages or hardware.

At the end of the examination, fasten all your work securely together.

The number of marks is given in brackets [ ] at the end of each question or part question.

**For Examiner's Use**

--

This document consists of **20** printed pages.



1 (a) Give **two** benefits of networking a set of computers.

1 .....

.....

.....

2 .....

.....

..... [2]

(b) A college decides to use network computers with wireless capability.

Give **one** advantage and **one** disadvantage of using wireless systems.

Advantage: .....

.....

Disadvantage: .....

..... [2]

2 The following table shows **three** applications which require specialist **output** devices.

For **each** application, suggest **one** possible **output** device and give a reason for your choice.

Application	Output device	Reason for choice of device
A visually impaired person using a word processor		
Using CAD to design a new engine		
Monitoring a house for burglars		

3 A user wishes to use a word processing application. They can either use a *command line interface* (CLI) or a *graphical user interface* (GUI) to open this application.

(a) Describe how both methods could be used to select the application including any input hardware needed.

(i) CLI

.....  
.....  
.....  
.....

(ii) GUI

.....  
.....  
.....  
..... [4]

(b) (i) What is meant by *automatic data capture*?

.....  
.....  
.....

(ii) Name a device used in automatic data capture and describe an application that uses it.

Device: .....

Application: .....

..... [3]

4 **Five** definitions and descriptions are shown below on the left hand side.

**Five** computer terms are shown on the right.

Match the definitions/descriptions on the left to the correct term on the right by drawing connecting arrows.

check if students' ages are in the range 11 to 18

computer generated operation of a chemical process

software that looks for information based on certain key words

system where all the data are collected first before being processed in one go

typing in a password twice to ensure it is correct

verification

validation

simulation

search engine

batch processing

[5]

5 When new software is produced it is usually accompanied by *user documentation* and *technical documentation*.

(a) Explain these two terms:

user documentation: .....

.....

.....

technical documentation: .....

.....

..... [2]

(b) The following list contains items that can be found in either or both types of documentation.

Tick (✓) the box which indicates where you would find each item.

Item	User documentation only	Technical documentation only	Both user <u>and</u> technical documentation
how to save a file			
program listing/coding			
hardware and software requirements			
file structures			
list of variables			
how to load the software			
meaning of errors/error messages			

[3]

6 (a) What is meant by the term *web browser*?

.....  
..... [1]

(b) Rock-ICT has set up a website as shown below:

The screenshot shows a website interface for 'ROCK - ICT'. At the top is a navigation menu with five items: 'Home', 'Sales', 'Basket', 'Checkout', and 'Payment'. The 'Payment' item is highlighted with a dark background. Below the navigation menu, the page content includes the text 'Choose your payment method:' followed by two radio button options: 'credit card' (which is selected) and 'debit card'. At the bottom of the content area, there is a link that says 'click here to go to CD website'. Three labels are placed around the screenshot: label (i) is on the left side of the main content area; label (ii) points to the 'Payment' menu item; and label (iii) points to the 'click here to go to CD website' link.

Give the names of the **three** parts that have been labelled:

(i) .....  
(ii) .....  
(iii) ..... [3]

(c) How does the website recognise the user's buying preferences as soon as they visit the website?

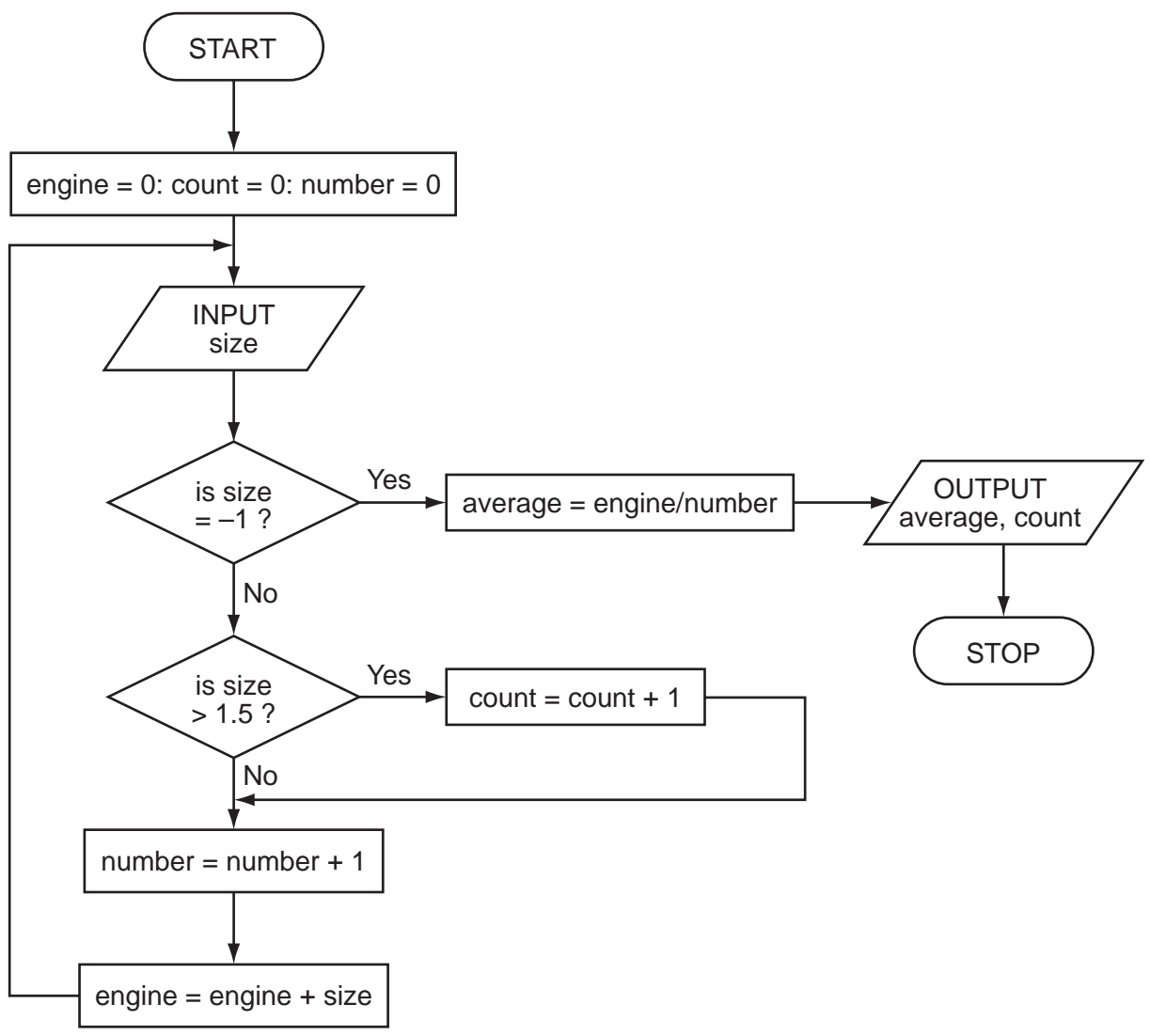
.....  
..... [1]

(d) Hacking is one security issue associated with the Internet and emails. State **two** other security issues.

1 .....  
.....  
2 .....  
..... [2]

7 The following flowchart inputs the size of a number of car engines; a value of -1 stops the input.

The following information is output: *average engine size* and *number of engines with size > 1.5*.

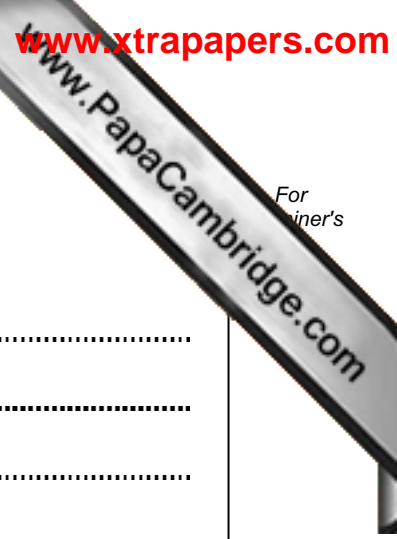




Complete the trace table for the following input data:

1.8, 2.0, 1.0, 1.3, 1.0, 2.5, 2.0, 1.3, 1.8, 1.3, -1

engine	count	number	size	average	OUTPUT



8 Robots are being introduced into a factory which makes engines.

(a) Describe **three** ways this could affect the workers.

1 .....

.....

2 .....

.....

3 .....

..... [3]

(b) One of the many advantages to management is the reduction in overall costs.

Give **two** reasons why using robots could reduce costs.

1 .....

.....

2 .....

..... [2]

(c) Give **two** other advantages to the management of introducing robots.

1 .....

.....

2 .....

..... [2]

9 A spreadsheet was set up to compare passenger costs for five airlines.

	A	B	C	D	E
1	Flight id	Distance (km)	Number of passengers	Total revenue (\$)	Cost per passenger (\$)
2	AA 151	3 000	240	60 000	250
3	AT 304	2 000	320	80 000	250
4	BR 106	1 500	150	45 000	300
5	CD 221	8 000	400	360 000	900
6	EX 115	6 000	280	140 000	500
7				Average cost:	

(a) What formula must be in E2 to calculate the cost per passenger.

..... [1]

(b) Cell E7 is to contain the average passenger cost.

What formula would need to be placed in this cell?

..... [1]

(c) It was decided to add two new columns (F and G) to find out if the airline made a profit or loss on each flight. The costs per flight are calculated by multiplying **Distance (km)** by 1/10th of the **Number of passengers**.

(i) What formulas must be in column F?

	F
1	Flight costs (\$)
2	
3	
4	
5	
6	

[2]

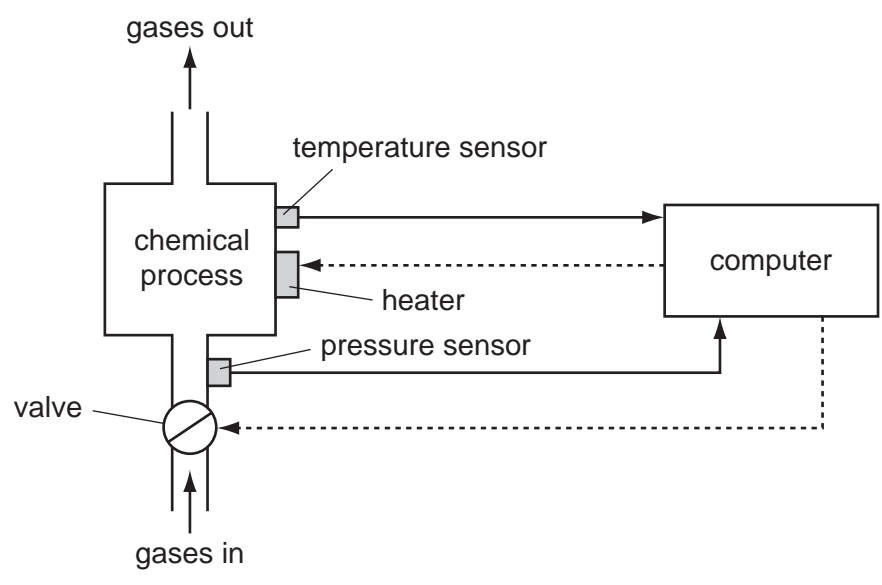
(ii) The formula = IF (F2 > D2, "Loss", "Profit") was added to cell G2. What would be output?

..... [1]

(iii) What formula would be in G5 after replication down from G2?

..... [1]

10 A computer system is being used to monitor and control a chemical process.



(a) Data are collected from sensors at regular intervals and compared with stored values.

(i) Describe how the computer uses this data when **monitoring** the chemical process.

.....  
.....  
.....  
..... [1]

(ii) Describe how the computer uses this data when **controlling** the chemical process.

.....  
.....  
.....  
..... [1]

(b) What steps are necessary for the computer to control the temperature of the ch... process?

.....  
.....  
.....  
.....  
.....  
.....  
.....  
.....  
..... [3]

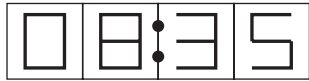
(c) Name **two** other sensors and give a different application where they are used.

sensor 1: .....  
application: .....  
.....  
.....  
sensor 2: .....  
application: .....  
.....  
..... [4]

11 A digital alarm clock is controlled by a microprocessor. It uses the 24-hour clock system (i.e. 6 pm is 18:00).

Each digit in a typical display is represented by a 4-digit binary code:

For example:



(clock display)

is represented by:

8	4	2	1	
0	0	0	0	1st digit (0)
1	0	0	0	2nd digit (8)
0	0	1	1	3rd digit (3)
0	1	0	1	4th digit (5)

(a) What time is shown on the clock display if the 4-digit binary codes are:

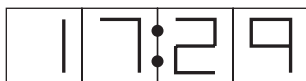
8	4	2	1
0	0	0	1
0	1	1	0
0	1	0	0
1	0	0	1



(clock display)

[2]

(b) What would be stored in the 4-digit binary codes if the clock display time was:



8	4	2	1	
				1st digit
				2nd digit
				3rd digit
				4th digit

[4]

(c) The clock alarm has been set at 08:00.

Describe the actions of the microprocessor which enable the alarm to sound at 08:00.

.....

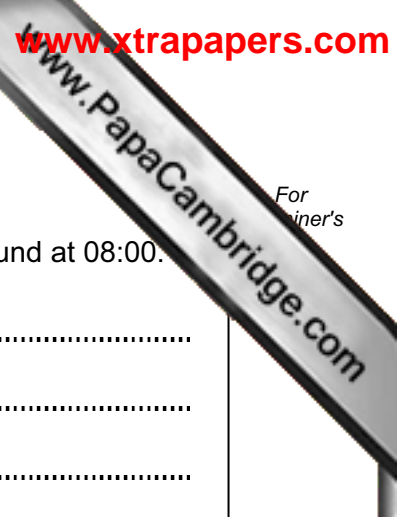
.....

.....

.....

..... [2]

For  
inert's



12 A database has been set up to show details about countries. Part of the database is below.

Country code	Country	Continent	Area (millions sq km)	Population (millions)	Coastline	Currency
CH	China	Asia	9.6	1320	Yes	yuan
IN	India	Asia	3.8	1150	Yes	rupee
PO	Poland	Europe	0.3	39	Yes	zloty
BO	Bolivia	America	1.1	9	No	boliviano
TI	Tibet	Asia	1.2	2	No	yuan
BR	Brazil	America	8.5	192	Yes	real
RO	Romania	Europe	0.2	22	No	leu
SA	Saudi Arabia	Asia	2.2	28	Yes	riyal
ZA	Zambia	Africa	0.7	12	No	kwacha

(a) How many fields are in each record?

..... [1]

(b) Using **Country code** only, what would be output if the following search condition was used?

**(Population (millions) > 1000) OR (Continent = "Asia")**

..... [2]

(c) Write down a search condition to find which countries have a land area less than 3 million square km and also have a coastline.

..... [2]

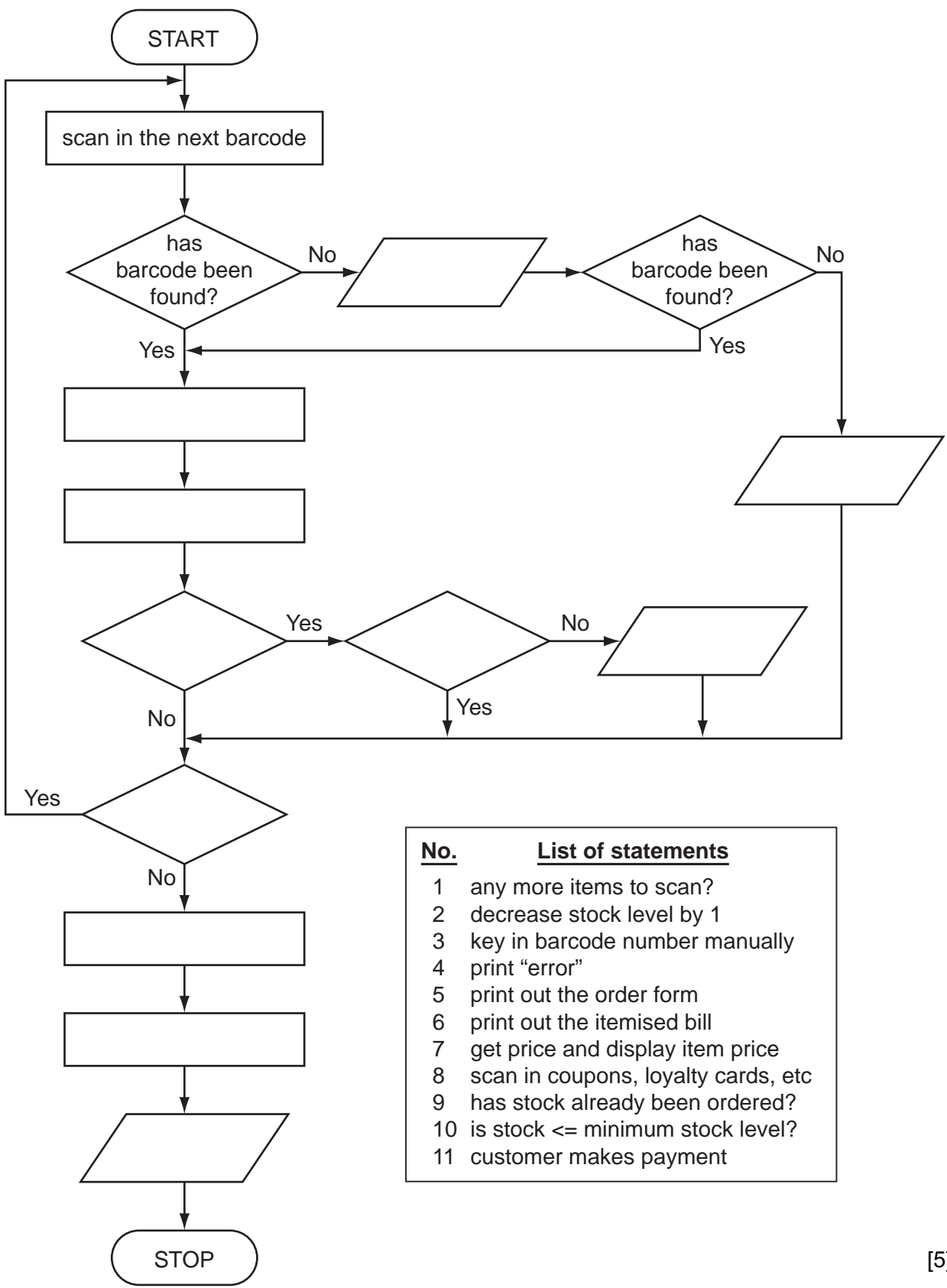
(d) If the database was sorted in **descending order** of population size, using **Country code** only, what would be the order of countries in the database?

..... [2]



13 The following flowchart shows how barcodes are used when a customer buys items in the supermarket. Barcodes are used to find the prices and to carry out stock control. Several stages are missing from the flowchart. These stages are shown in the item list below.

Insert the correct statements, **using numbers only**, to complete the flowchart.



No.	List of statements
1	any more items to scan?
2	decrease stock level by 1
3	key in barcode number manually
4	print "error"
5	print out the order form
6	print out the itemised bill
7	get price and display item price
8	scan in coupons, loyalty cards, etc
9	has stock already been ordered?
10	is stock <= minimum stock level?
11	customer makes payment

14 An alarm, Y, sends a signal ( $Y = 1$ ) when certain fault conditions in a chemical process are detected. The inputs are:

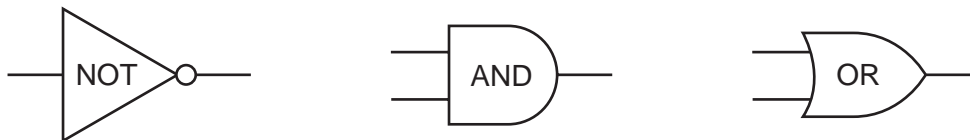
Input	Binary value	Condition
A	1	acidity > 5
	0	acidity $\leq$ 5
T	1	temperature $\geq$ 120°C
	0	temperature < 120°C
S	1	stirrer bar ON
	0	stirrer bar OFF

The alarm, Y, returns a value of 1 if:

**either** (i) temperature  $\geq$  120°C AND stirrer bar is OFF

**or** (ii) acidity > 5 AND temperature < 120°C

(a) Draw the logic circuit for the above system using these logic gates.



[5]

(b) Complete the truth table for this alarm system.

A	T	S	Y
0	0	0	
0	0	1	
0	1	0	
0	1	1	
1	0	0	
1	0	1	
1	1	0	
1	1	1	

[4]

15 A student gave the following **three** computer definitions.

Give the name of the term being described in **each** case.

(i) "a signal from a device sent to a computer causing the CPU to stop its current operation temporarily"

.....  
.....

(ii) "an exchange of signals between two devices when communicating to ensure synchronisation"

.....  
.....

(iii) "a temporary memory to store data waiting to be sent to a device"

.....  
.....

[3]

