



Cambridge International Examinations
Cambridge International General Certificate of Secondary Education

GEOGRAPHY

0460/42

Paper 4 Alternative to Coursework

February/March 2017

INSERT

1 hour 30 minutes

READ THESE INSTRUCTIONS FIRST

The Insert contains Figs. 1 and 2, Tables 1, 2 and 6 for Question 1, and Photographs A, B, C and D, Figs. 6A, 6B, 7A, 7B, 8A and 8B for Question 2.

The Insert is **not** required by the Examiner.



This document consists of **13** printed pages and **3** blank pages.

Fig. 1 for Question 1

Traffic recording sheet

Day:		Date:				
Road:		Going into / out of the town centre				
Vehicle category	Time: 08.00–09.00		Time: 12.00–13.00		Time: 17.00–18.00	
		Total		Total		Total
Bicycles / motor bikes		Total		Total		Total
Cars / taxis		Total		Total		Total
Vans / minibuses		Total		Total		Total
Lorries / buses		Total		Total		Total
Total of all vehicles						

Fig. 1

Fig. 2 for Question 1

Sketch map of roads where traffic survey took place

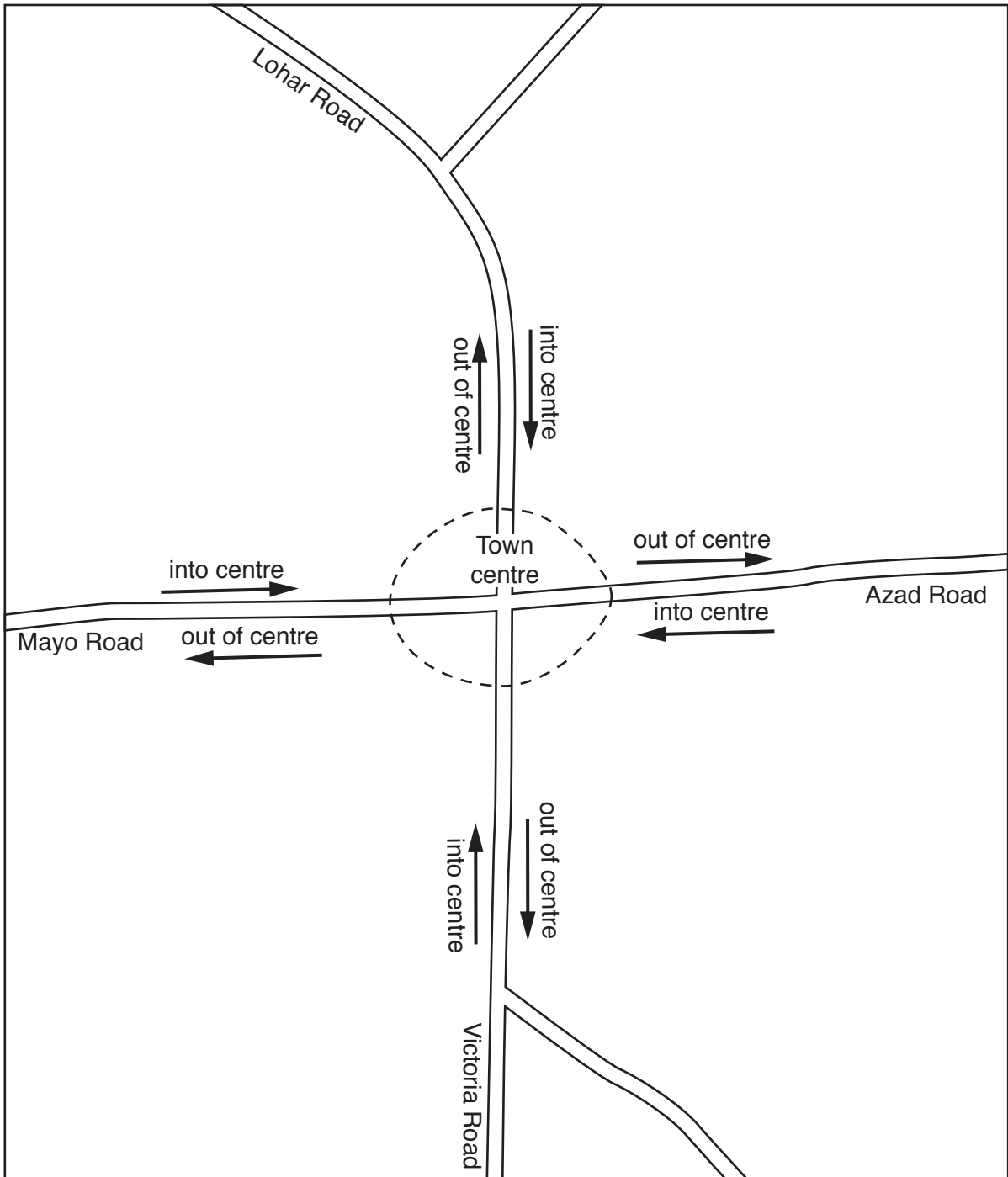


Fig. 2

Table 1 for Question 1

Results of traffic count

Road	08.00–09.00	12.00–13.00	17.00–18.00
Lohar Road going into town centre	283	102	157
Lohar Road going out of town centre	117	67	286
Azad Road going into town centre	302	153	193
Azad Road going out of town centre	160	98	313
Victoria Road going into town centre	284	74	128
Victoria Road going out of town centre	200	93	294
Mayo Road going into town centre	356	123	237
Mayo Road going out of town centre	245	153	368

Table 2 for Question 1

Total number of vehicles in the different categories on the four roads

Vehicle category	Number
Lohar Road	
Bicycles / motor bikes	44
Cars / taxis	608
Vans / minibuses	204
Lorries / buses	156
Total	1012
Azad Road	
Bicycles / motor bikes	68
Cars / taxis	747
Vans / minibuses	266
Lorries / buses	138
Total	1219
Victoria Road	
Bicycles / motor bikes	82
Cars / taxis	658
Vans / minibuses	188
Lorries / buses	145
Total	1073
Mayo Road	
Bicycles / motor bikes	116
Cars / taxis	896
Vans / minibuses	283
Lorries / buses	187
Total	1482

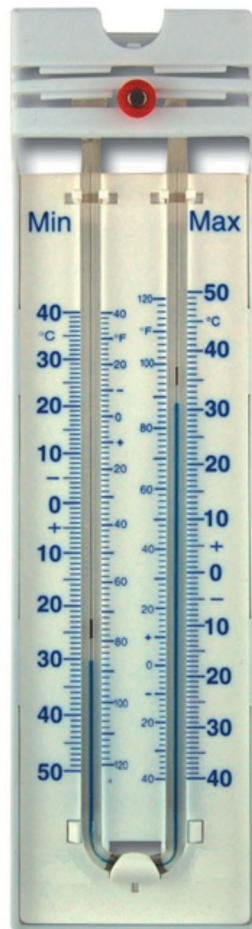
Table 6 for Question 1

Total index scores for traffic flow

Road	Time of traffic count		
	08.00–09.00	12.00–13.00	17.00–18.00
Lohar Road going into town centre	389	150	259
Lohar Road going out of town centre	200	120	391
Azad Road going into town centre	449	207	309
Azad Road going out of town centre	201	144	430
Victoria Road going into town centre	390	110	204
Victoria Road going out of town centre	300	119	410
Mayo Road going into town centre	506	178	351
Mayo Road going out of town centre	321	201	524

Photograph A for Question 2

Maximum-minimum thermometer



Photograph B for Question 2

Digital maximum-minimum thermometer



Figs. 6A and 6B for Question 2

Daily maximum and minimum temperatures in Singapore

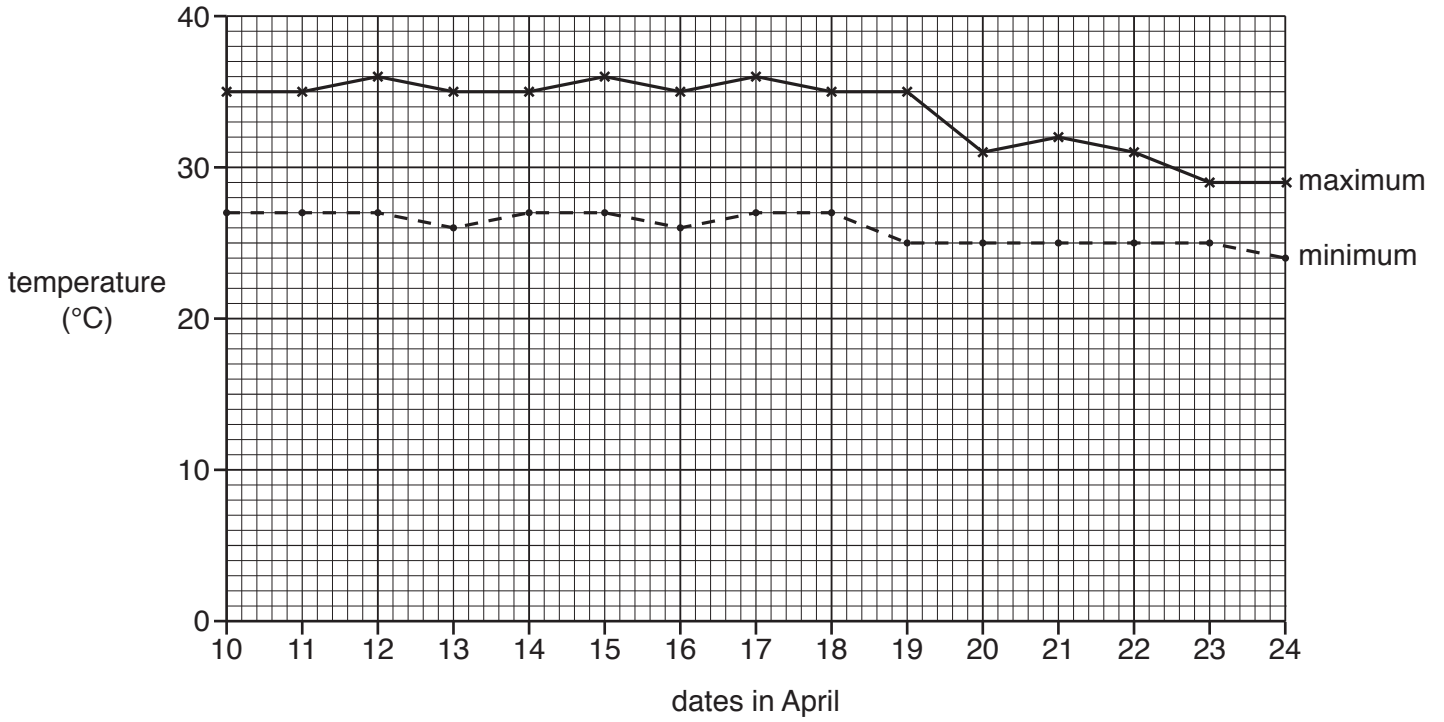


Fig. 6A

Daily atmospheric pressure measurements in Singapore

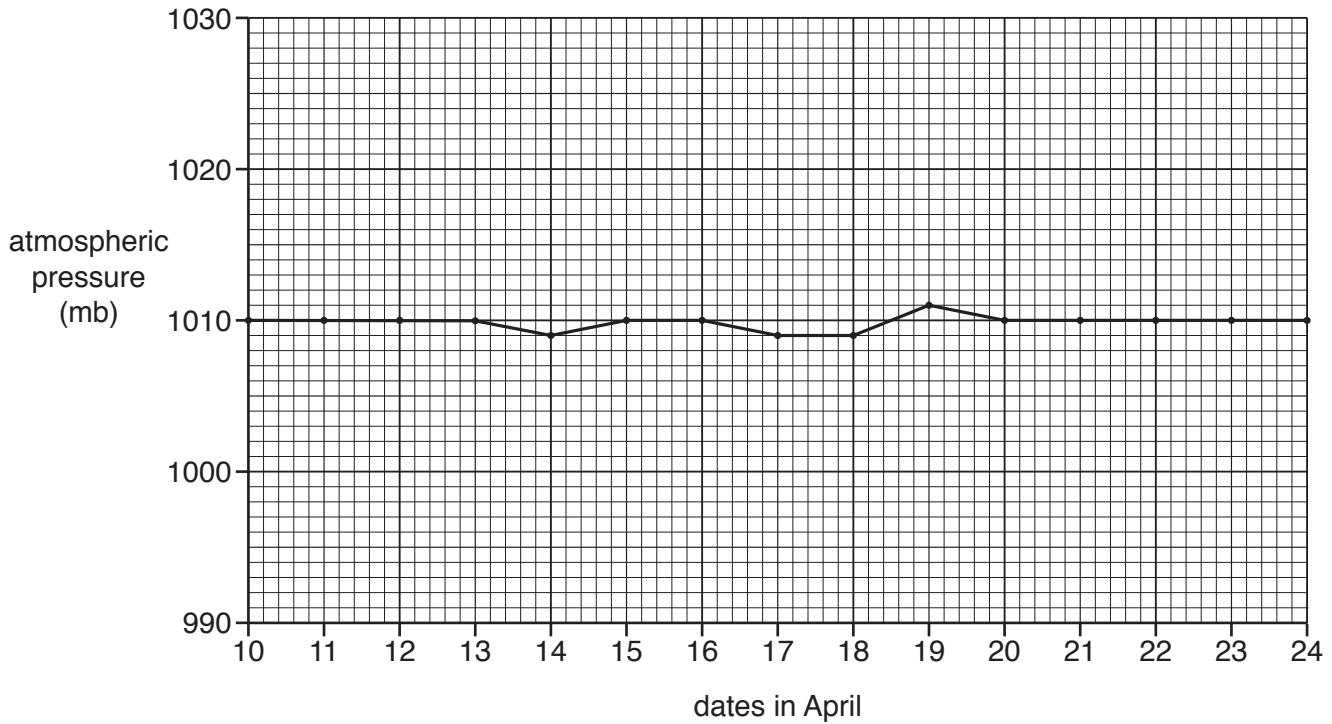


Fig. 6B

Figs. 7A and 7B for Question 2

Daily maximum and minimum temperatures in Albany, USA

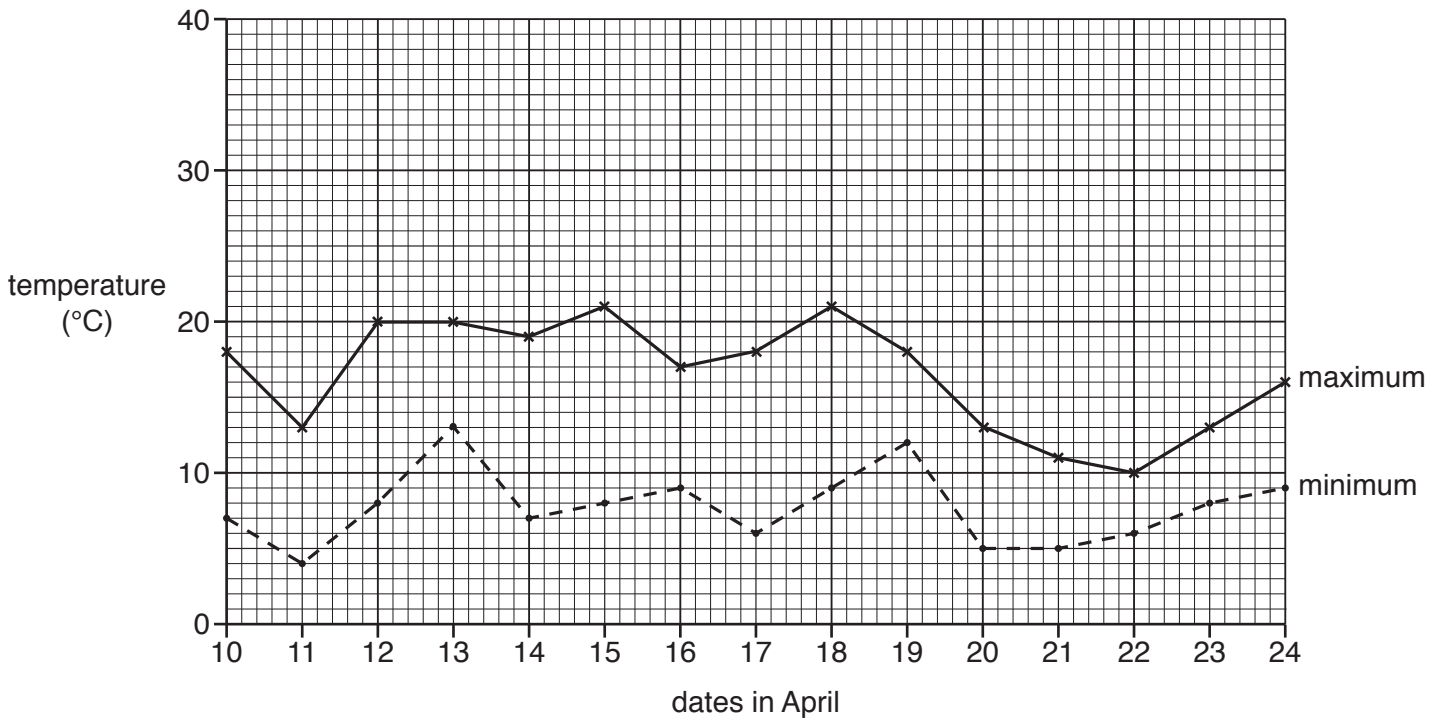


Fig. 7A

Daily atmospheric pressure measurements in Albany, USA

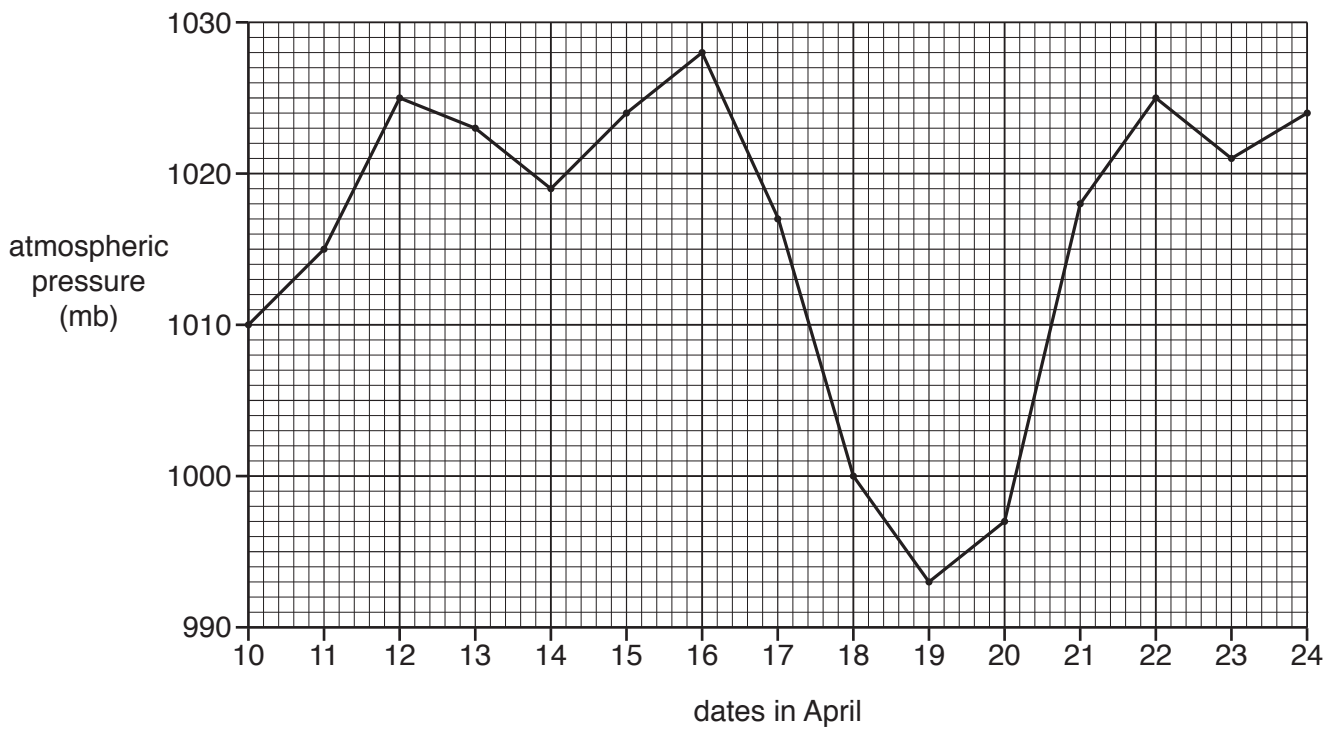


Fig. 7B

11

Figs. 8A and 8B for Question 2

Daily rainfall totals in Singapore

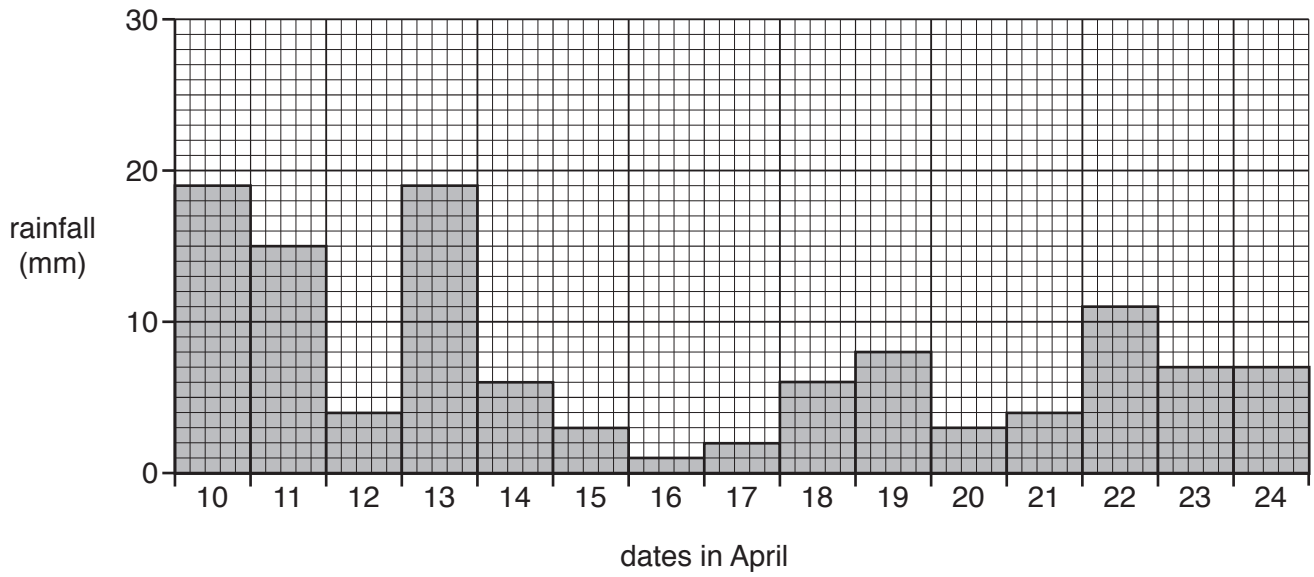


Fig. 8A

Daily rainfall totals in Albany, USA

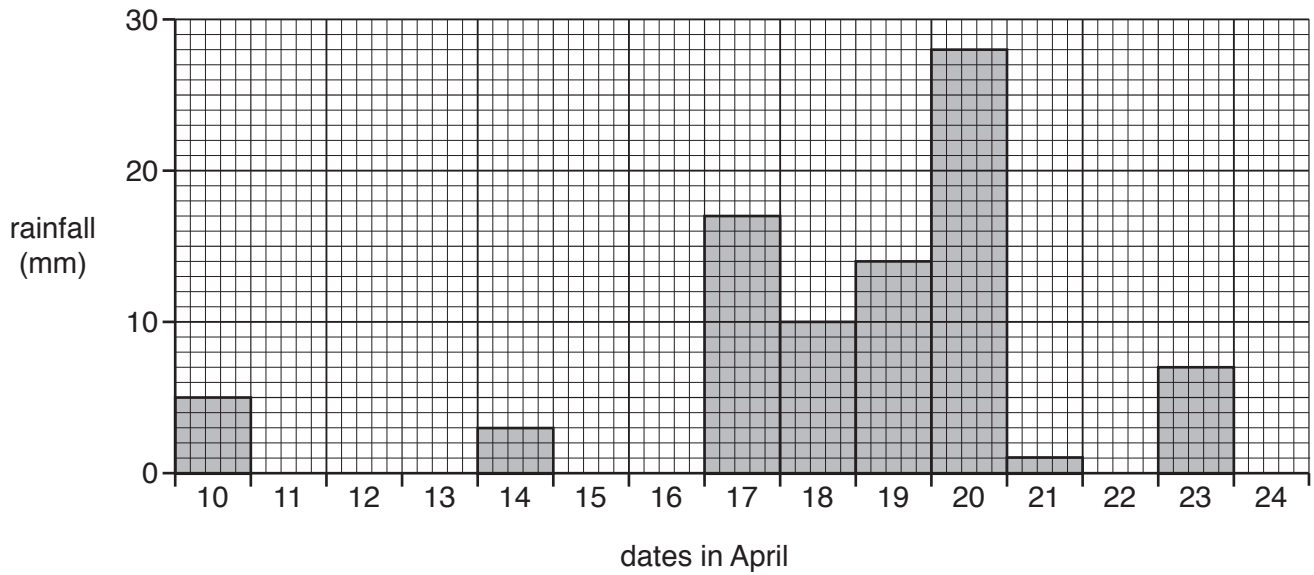


Fig. 8B

12

Photograph C for Question 2

Rain gauge



Photograph D for Question 2

Anemometer and wind vane



BLANK PAGE

Permission to reproduce items where third-party owned material protected by copyright is included has been sought and cleared where possible. Every reasonable effort has been made by the publisher (UCLES) to trace copyright holders, but if any items requiring clearance have unwittingly been included, the publisher will be pleased to make amends at the earliest possible opportunity.

To avoid the issue of disclosure of answer-related information to candidates, all copyright acknowledgements are reproduced online in the Cambridge International Examinations Copyright Acknowledgements Booklet. This is produced for each series of examinations and is freely available to download at www.cie.org.uk after the live examination series.

Cambridge International Examinations is part of the Cambridge Assessment Group. Cambridge Assessment is the brand name of University of Cambridge Local Examinations Syndicate (UCLES), which is itself a department of the University of Cambridge.