

## **Survey Map**

**In order to preserve the scale, the map should be printed in colour onto A3 paper.**

**When printing, select 'Actual size'.**

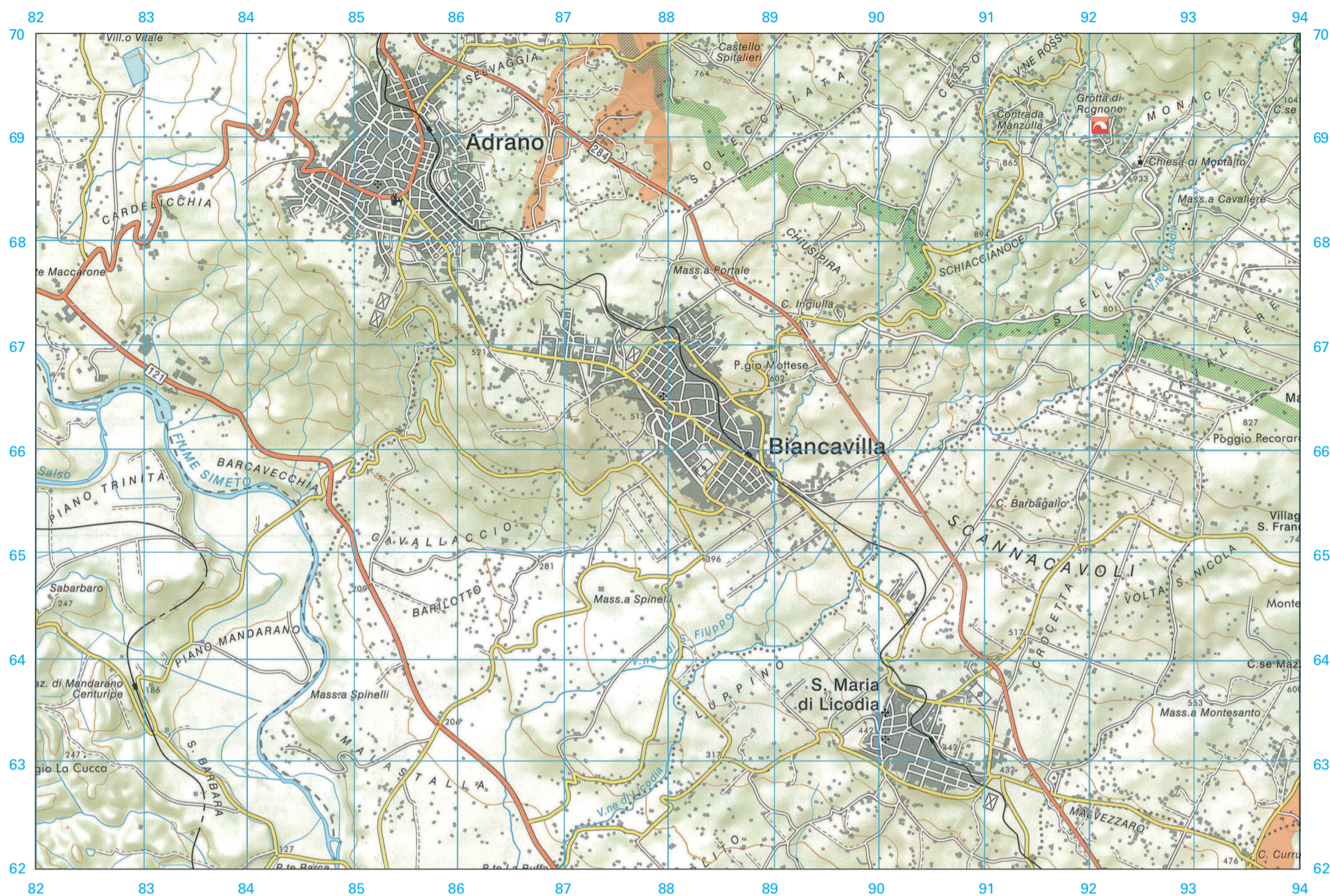
**Do not select 'Fit' as this will re-size the map.**

**You may need to change the paper size to A3.**

**Ensure the orientation is Portrait.**



# Biancavilla



### Key

- motorway
- national main road
- other roads
- paths & tracks
- no vehicles allowed
- railway with station and tunnel
- cemetery, castle, fountain
- church, chapel, tabernacle, ruins
- house / building
- funicular, chair lift, ski lift
- provincial boundaries
- hiking trails
- alpine walks, climbing, refuges
- cave (easy to access), cave (difficult to access)
- lava flows

- ski routes
  - mountain bike routes
  - river routes
  - kayaking, rafting, river access point
  - waterflow measurer, dangerous places
  - obstruction, route unavailable
  - hang gliding
  - protected areas
  - dive sites
  - spot height (height in metres above sea level)
- The contour interval is 50 metres
- river

