



**Cambridge International Examinations**  
Cambridge International General Certificate of Secondary Education

CANDIDATE  
NAME

CENTRE  
NUMBER

--	--	--	--	--

CANDIDATE  
NUMBER

--	--	--	--



**PAKISTAN STUDIES**

**0448/02**

Paper 2 The Environment of Pakistan

**May/June 2017**

**1 hour 30 minutes**

Candidates answer on the Question Paper.

Additional Materials: Ruler

**READ THESE INSTRUCTIONS FIRST**

Write your name, Centre number and candidate number in the spaces provided.

Write in dark blue or black pen.

Do not use staples, paper clips, glue or correction fluid.

DO **NOT** WRITE IN ANY BARCODES.

Answer any **three** questions.

The Insert contains Photograph A for Question 1 and Photographs B and C for Question 2.

The Insert is **not** required by the Examiner.

The number of marks is given in brackets [ ] at the end of each question or part question.

This document consists of **23** printed pages, **1** blank page and **1** Insert.

1 (a) (i) What is meant by each of the following terms?

A Subsistence crop farming .....

.....

B Cash crop farming .....

..... [2]

(ii) From the list below, choose **one** example of a crop that is mainly grown as a subsistence crop and **one** that is mainly grown as a cash crop.

rice      sugar cane      oilseeds      vegetables      cotton      wheat

Subsistence crop .....

Cash crop ..... [2]

(iii) What are the advantages and disadvantages of using High Yielding Varieties of crops?

Advantages	Disadvantages
.....	.....
.....	.....
.....	.....
.....	.....
.....	.....
.....	.....
.....	.....
.....	.....
.....	.....

[4]

(b) Study Fig. 1, which shows population growth rates for selected provinces over three time periods.

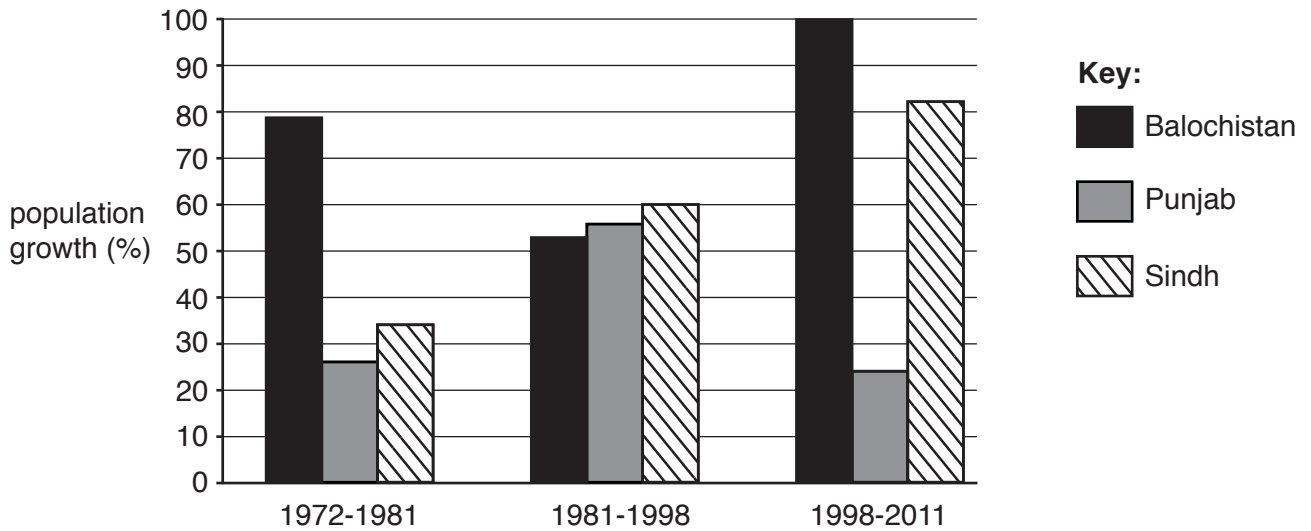


Fig. 1

(i) A What was the population growth rate for Punjab between 1972 and 1981?

.....

B Which province showed an increase in population growth rate in every period?

.....[2]

(ii) Identify **one** difference between the population growth rates of Balochistan and Punjab.

.....

.....[1]

(iii) Explain **two** factors which have contributed to population growth in Pakistan. You should develop your answer.

.....

.....

.....

.....

.....

.....

.....

.....[4]

(c) Study Photograph A (Insert).

(i) Describe the type of farming shown in the photograph.

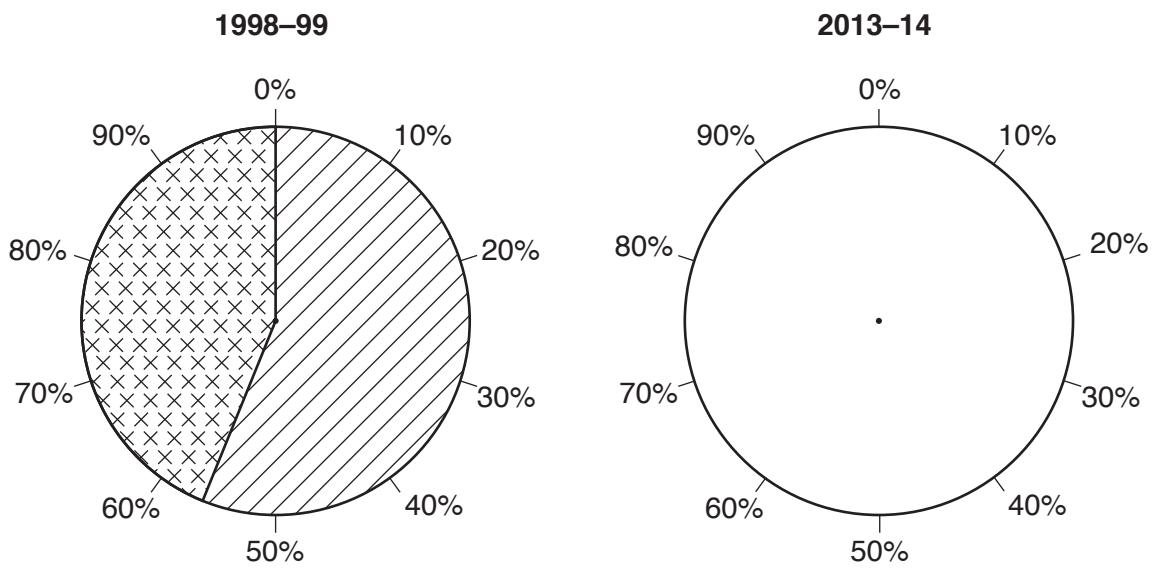
.....  
.....  
.....  
..... [2]

(ii) How is the keeping of buffalo different from the type of farming in Photograph A?

.....  
.....  
.....  
..... [2]



2 (a) Study Fig. 2, which shows changes in road type in Pakistan over a 15-year period.



- Key:**
- Metalled
  - Unmetalled

**Fig. 2**

(i) Complete the pie chart for 2013–14 by using the following information and the key provided:

Road type	Percent
Metalled	73
Unmetalled	27

[2]

(ii) State the increase in the percentage of metalled roads in Pakistan between 1998–99 and 2013–14.

.....[1]

(iii) Suggest **two** advantages of developing the motorway network in Pakistan.

1 .....

.....

2 .....

.....[2]

(iv) Explain the difficulties of building roads in the desert areas of Pakistan. You should develop your answer.

.....  
.....  
.....  
.....  
.....  
.....  
.....  
.....  
.....  
.....[4]

(b) Study Photographs B and C (Insert), which show typical working scenes in rural areas.

(i) Using Photograph B and your own knowledge, describe how bricks are made in rural areas.

.....  
.....  
.....  
.....  
.....  
.....  
.....  
.....[3]

(ii) Describe the work being done in Photograph C.

.....  
.....  
.....  
.....[2]

(c) (i) Why is employment in urban areas considered to be more attractive than employment in rural areas?

.....  
.....  
.....  
..... [2]

(ii) State **three** pull factors that attract migrants to urban areas **other than** for work.

1 .....  
.....  
2 .....  
.....  
3 .....  
..... [3]





3 (a) Study Fig. 3, which ranks Pakistan’s main trading partners for imports and exports in 2013.

Rank	Origin of imports	Rank	Destination of exports
1	UAE	1	USA
2	China	2	China
3	Saudi Arabia	3	Afghanistan
4	Kuwait	4	UAE
5	India	5	Germany
6	Malaysia	6	UK

**Fig. 3**

(i) Name a country which is a main trading partner for both imports and exports.

.....[1]

(ii) For **either** imports **or** exports suggest reasons why the countries listed are important trading partners for Pakistan.

Choice .....

.....  
 .....  
 .....  
 .....  
 .....  
 .....  
 .....  
 .....[3]

(b) Study Fig. 4, which shows the amount of coal produced in Pakistan over the period 1980–2012.

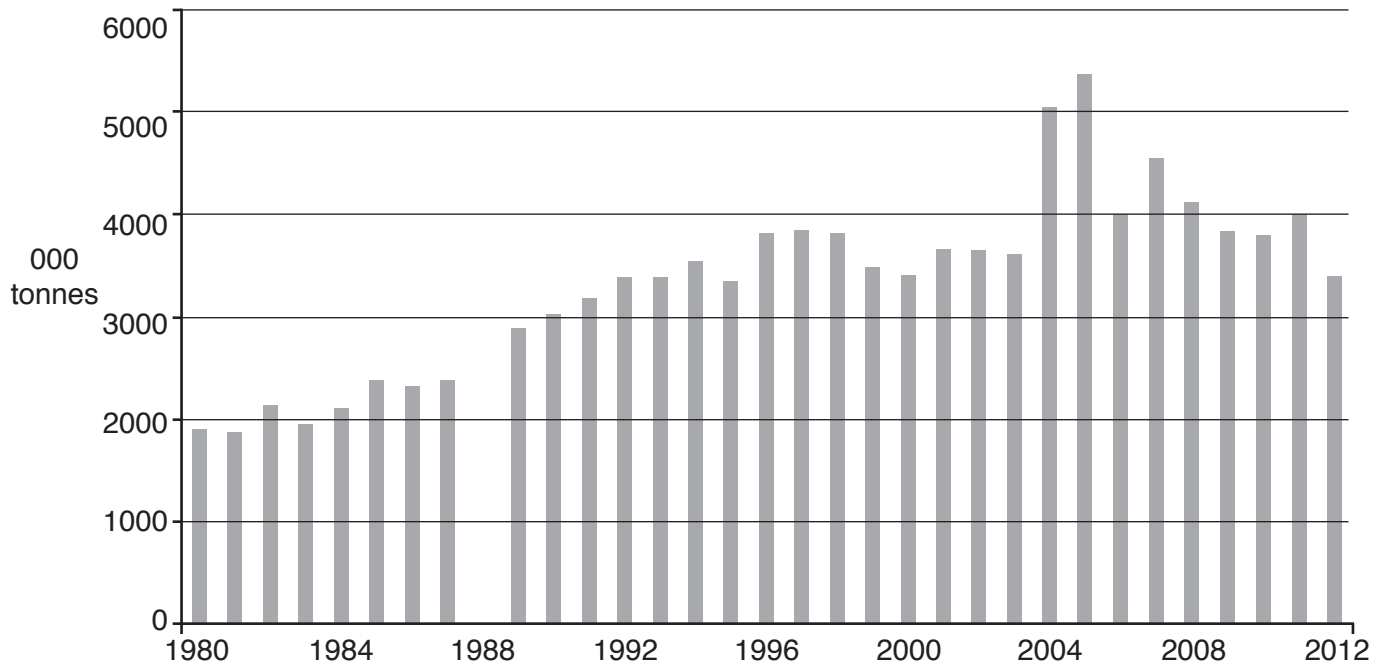


Fig. 4

(i) Name **two** coal producing areas in Pakistan.

1 .....

2 ..... [2]

(ii) A Complete Fig. 4, by drawing the bar for 1988. The amount of coal produced in 1988 was 3 million tonnes.

B In which year did coal production peak?

.....

C How has coal production changed since its peak? **Circle** the correct answer.

increased

decreased

stayed the same

[3]





4 (a) (i) Study Fig. 5, which shows a diagram of the karez system of irrigation.

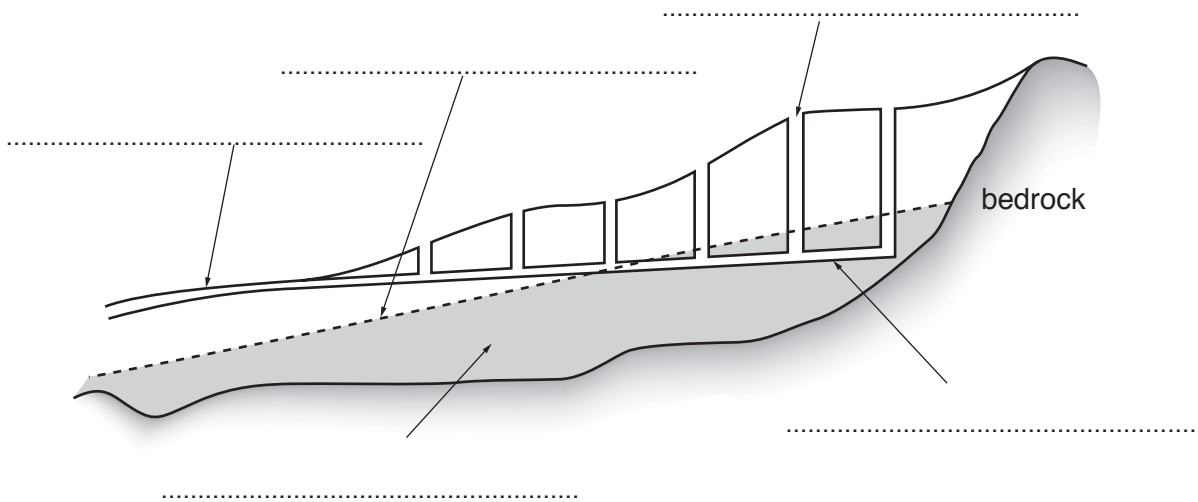


Fig. 5

Choose **three** terms from the list below and use them to label the diagram in **three** of the spaces provided.

maintenance shaft      aquifer      canal      tunnel      water table      [3]

(ii) Give an example of a barrage in Pakistan and name the river it is on.

Barrage .....

River ..... [2]

(iii) State why barrages are needed in Pakistan.

.....  
.....  
.....  
..... [2]

(b) (i) Describe **two** ways in which the atmosphere in Pakistan can be polluted.

1 .....

.....

2 .....

..... [2]



(iii) About 60% of irrigation water is lost before it reaches crops. Give **three** reasons why irrigation water is lost in this way.

1 .....

.....

2 .....

.....

3 .....

.....[3]





- 5 (a) Study Fig. 7, which shows the amount of oil produced in Pakistan and the amount of oil imported, for selected years.

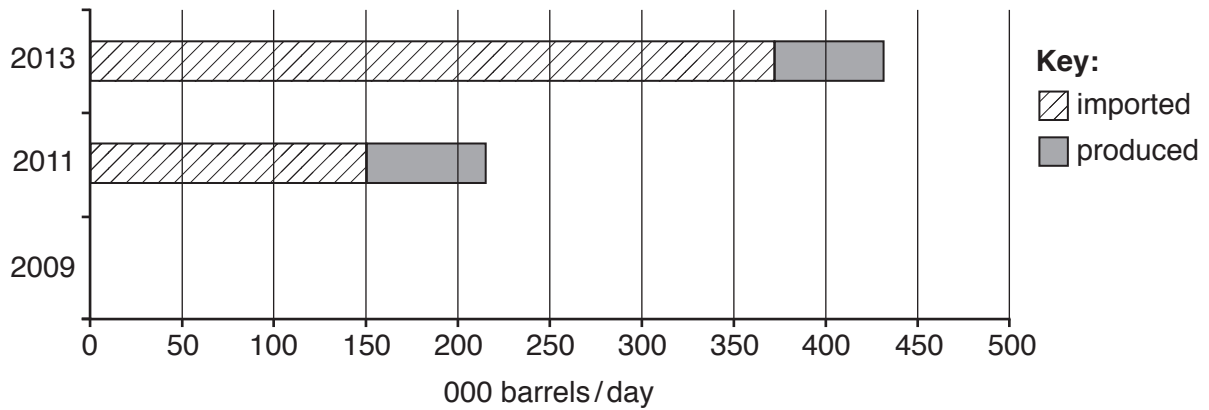


Fig. 7

- (i) Name the location of **one** oil refinery in Pakistan. Give **one** reason to suggest why it is located there.

Location .....

Reason .....

..... [2]

- (ii) Complete Fig. 7 by drawing the bar for 2009, using the information below:

2009	Barrels/day
Imported	185 000
Produced	60 000

[1]

- (iii) Compare the amount of oil produced and the amount of oil imported in Pakistan in the years 2011 and 2013.

.....

.....

.....

..... [2]

(iv) Give **two** reasons why Pakistan imports large amounts of oil.

1 .....

.....

2 .....

..... [2]

(b) Study Fig. 8, which shows population and electricity production in Pakistan over the period 2000–2014.

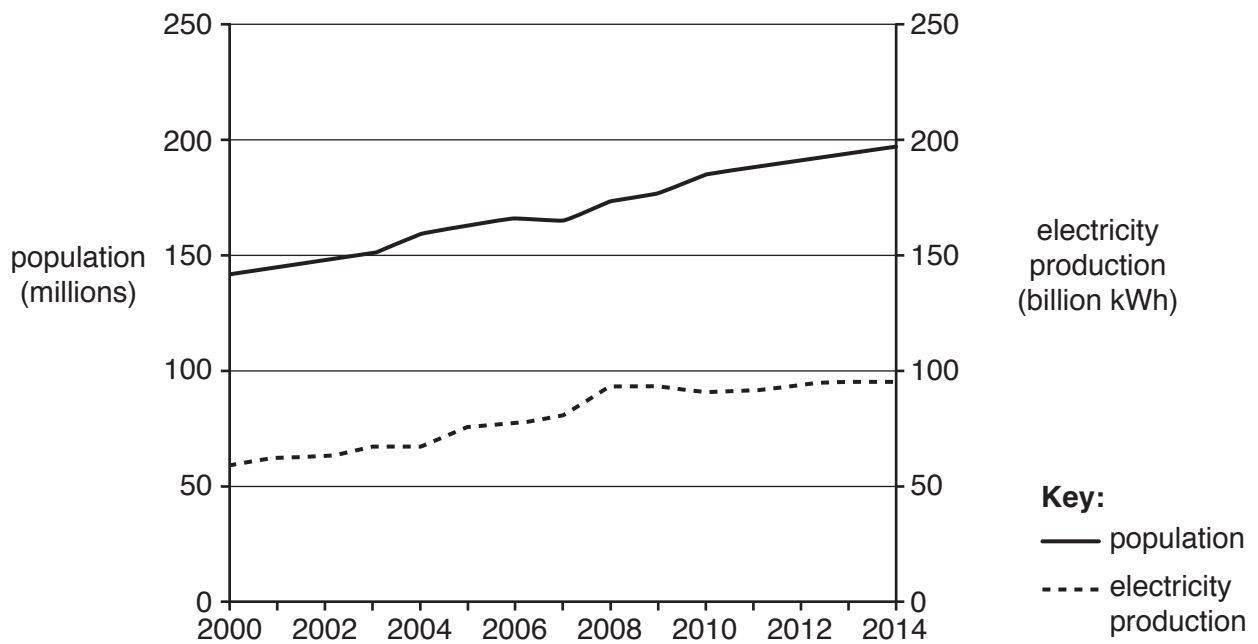


Fig. 8

(i) A Describe the relationship between population and electricity production from 2000 to 2008.

.....

.....

B Describe the changes in population and electricity production since 2008.

.....

..... [2]









**BLANK PAGE**

---

Permission to reproduce items where third-party owned material protected by copyright is included has been sought and cleared where possible. Every reasonable effort has been made by the publisher (UCLES) to trace copyright holders, but if any items requiring clearance have unwittingly been included, the publisher will be pleased to make amends at the earliest possible opportunity.

To avoid the issue of disclosure of answer-related information to candidates, all copyright acknowledgements are reproduced online in the Cambridge International Examinations Copyright Acknowledgements Booklet. This is produced for each series of examinations and is freely available to download at [www.cie.org.uk](http://www.cie.org.uk) after the live examination series.

Cambridge International Examinations is part of the Cambridge Assessment Group. Cambridge Assessment is the brand name of University of Cambridge Local Examinations Syndicate (UCLES), which is itself a department of the University of Cambridge.