



Cambridge Assessment International Education
Cambridge International General Certificate of Secondary Education

PAKISTAN STUDIES

0448/02

Paper 2 The Environment of Pakistan

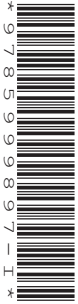
May/June 2019

INSERT

1 hour 30 minutes

READ THESE INSTRUCTIONS FIRST

This Insert contains Figs. 4.2, 4.3, 4.4, 4.5 and 4.6 for Question 4 and Figs. 5.2 and 5.3 for Question 5.



This document consists of **6** printed pages and **2** blank pages.

Fig. 4.2 for Question 4



Fig. 4.3 for Question 4



Fig. 4.4 for Question 4

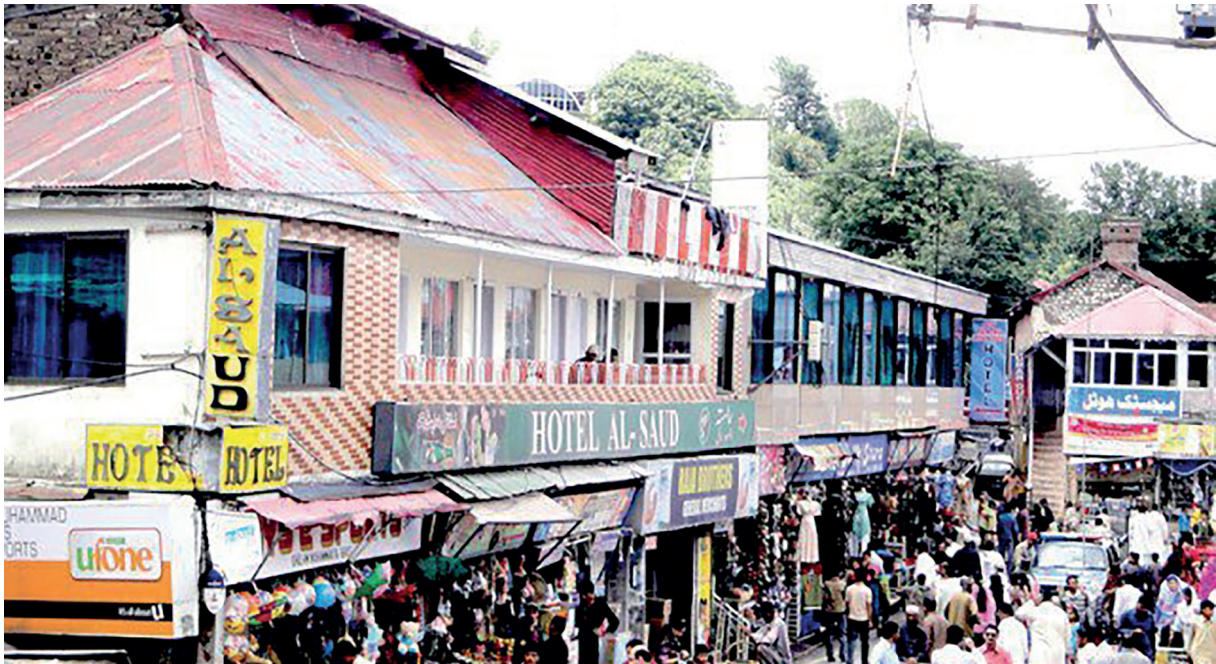


Fig. 4.5 for Question 4



Fig. 4.6 for Question 4

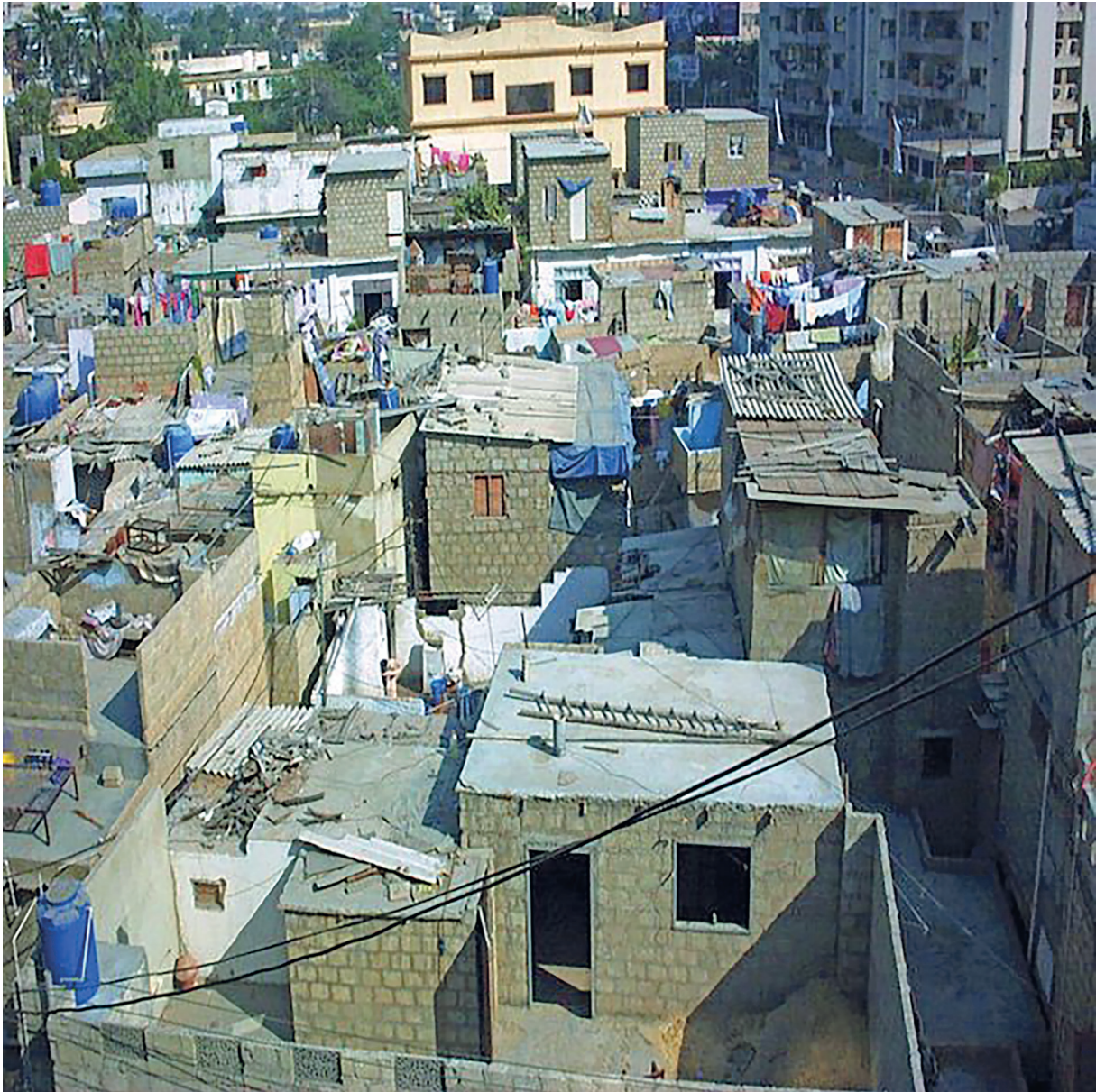


BLANK PAGE

Fig. 5.2 for Question 5



Fig. 5.3 for Question 5



BLANK PAGE

The boundaries and names shown, the designations used and the presentation of material on the maps contained in this question paper/insert do not imply official endorsement or acceptance by Cambridge Assessment International Education concerning the legal status of any country, territory, or area or any of its authorities, or of the delimitation of its frontiers or boundaries.

Permission to reproduce items where third-party owned material protected by copyright is included has been sought and cleared where possible. Every reasonable effort has been made by the publisher (UCLES) to trace copyright holders, but if any items requiring clearance have unwittingly been included, the publisher will be pleased to make amends at the earliest possible opportunity.

To avoid the issue of disclosure of answer-related information to candidates, all copyright acknowledgements are reproduced online in the Cambridge Assessment International Education Copyright Acknowledgements Booklet. This is produced for each series of examinations and is freely available to download at www.cambridgeinternational.org after the live examination series.

Cambridge Assessment International Education is part of the Cambridge Assessment Group. Cambridge Assessment is the brand name of the University of Cambridge Local Examinations Syndicate (UCLES), which itself is a department of the University of Cambridge.