



Cambridge Pre-U

GEOGRAPHY

9768/01

Paper 1 Global Environments

May/June 2022

INSERT

1 hour 30 minutes

INFORMATION

- This insert contains all the resources referred to in the questions.
- You may annotate this insert and use the blank spaces for planning. **Do not write your answers** on the insert.



This syllabus is regulated for use in England, Wales and Northern Ireland as a Cambridge International Level 3 Pre-U Certificate.

This document has **8** pages. Any blank pages are indicated.

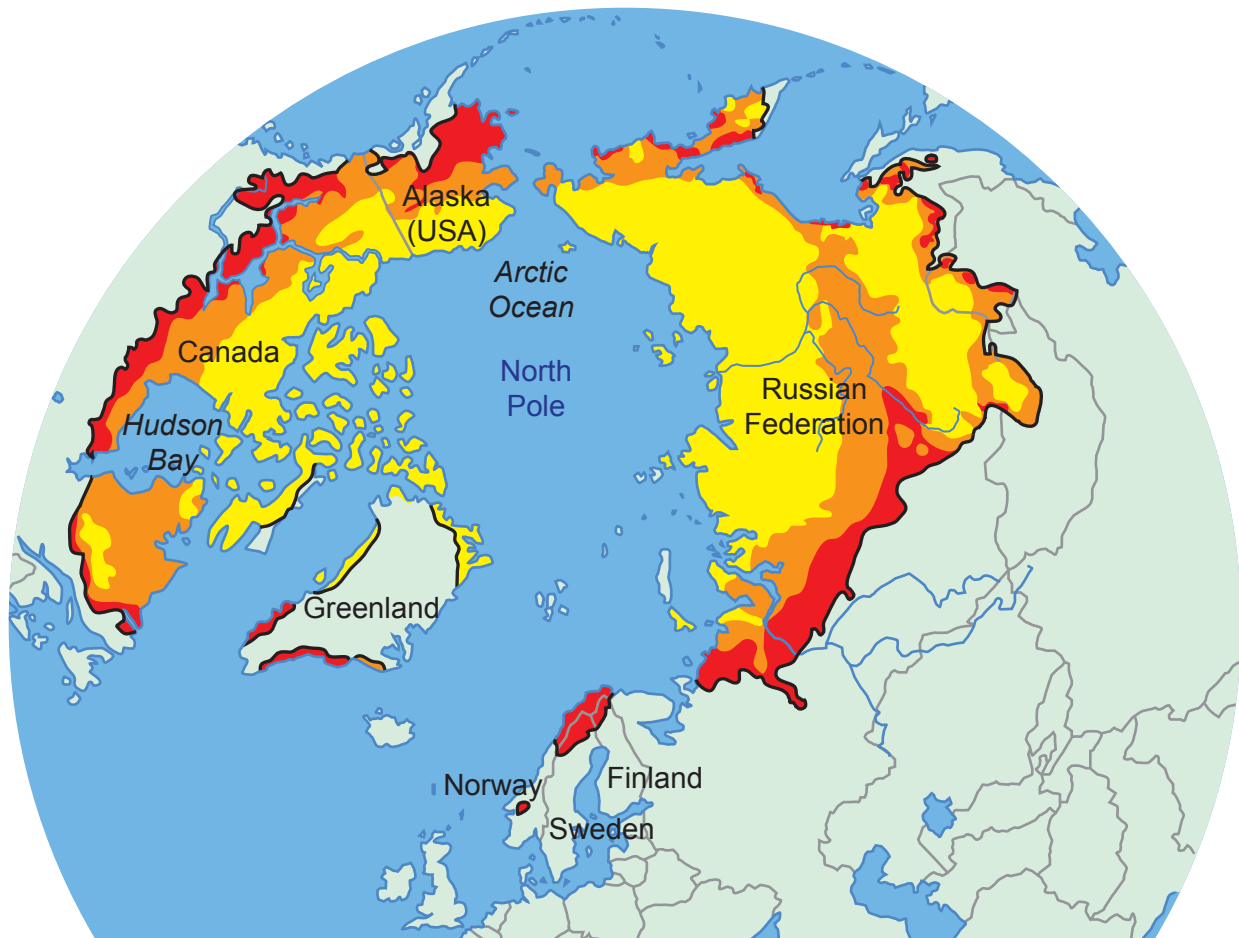
Fig. 1.1 for Question 1

A hot arid landscape in Arizona, USA



Fig. 2.1 for Question 2

The predicted changing extent of permafrost in northern Eurasia and North America

**Key**

- areas of permafrost predicted to thaw by 2050
- areas of permafrost predicted to thaw by 2100
- areas of permafrost predicted to remain frozen in 2100
- current extent of permafrost

Fig. 3.1 for Question 3
The outcome of a recent mass movement event on a stretch of coastline in the UK

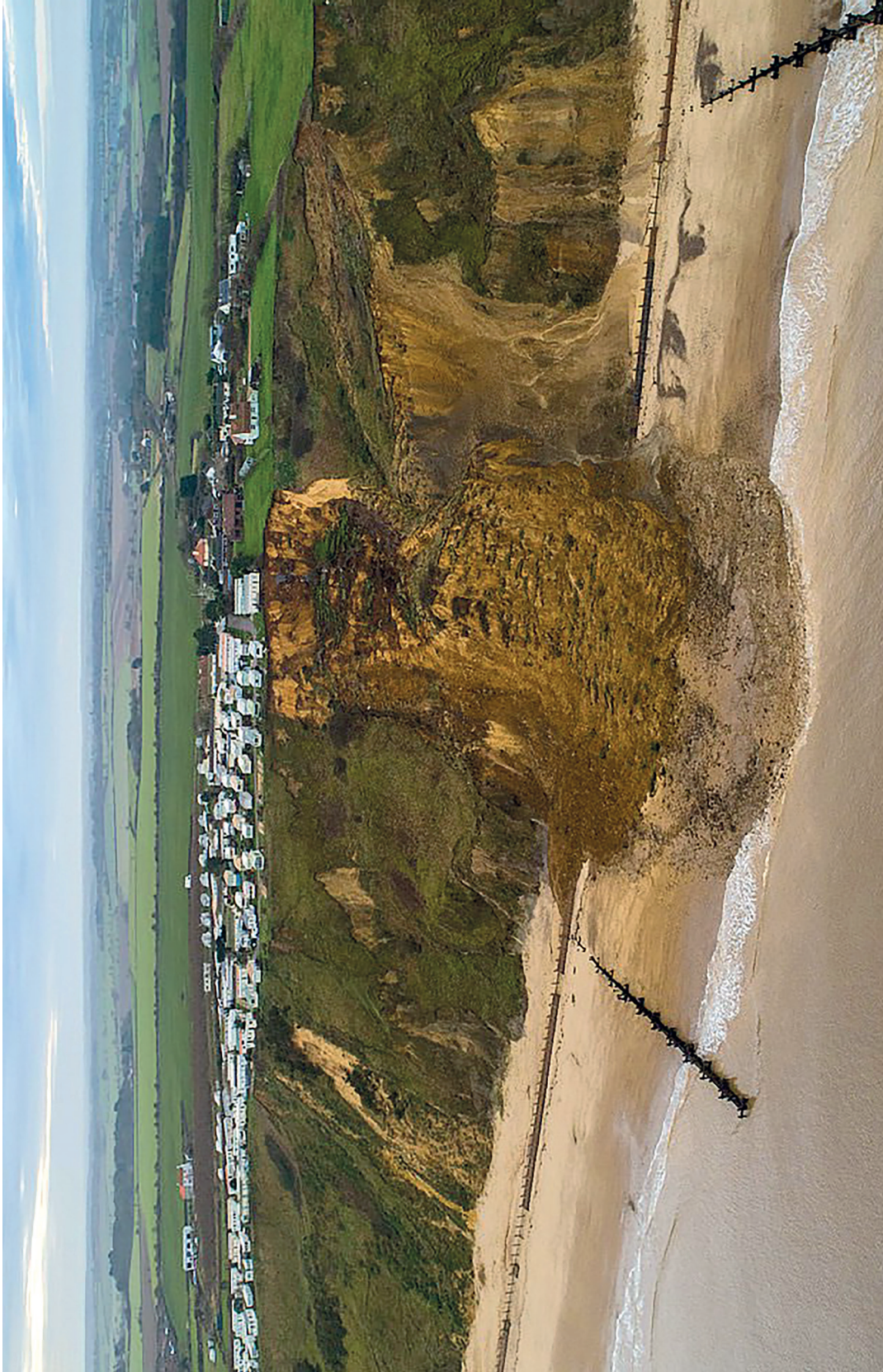


Fig. 4.1 for Question 4

The number of species with height in a tropical rainforest

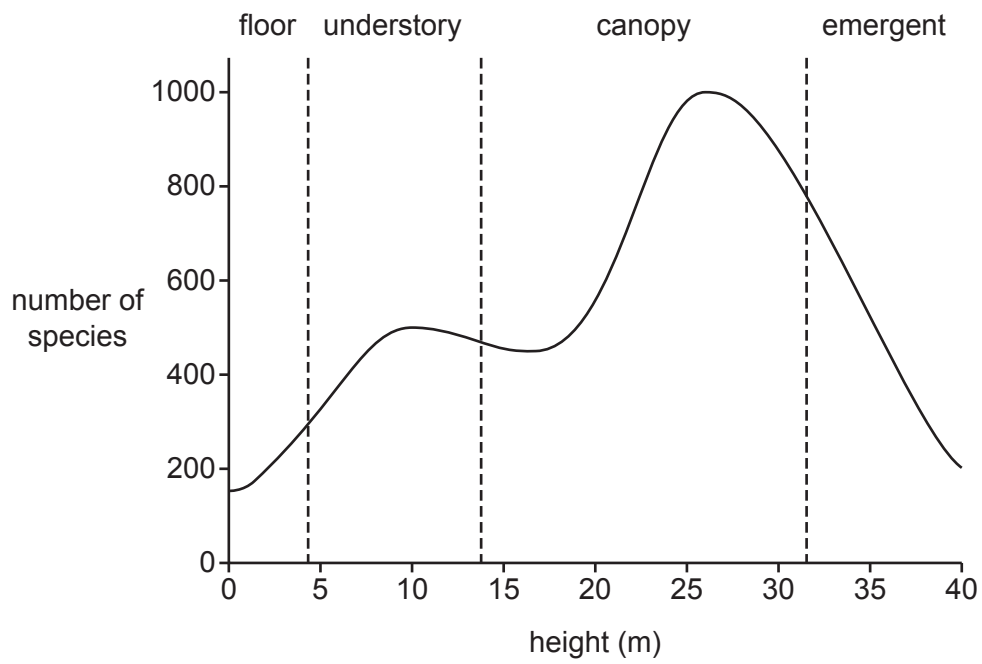


Fig. 5.1 for Question 5

The theoretical effect of a natural disturbance on the percentage of vegetation cover in a temperate environment

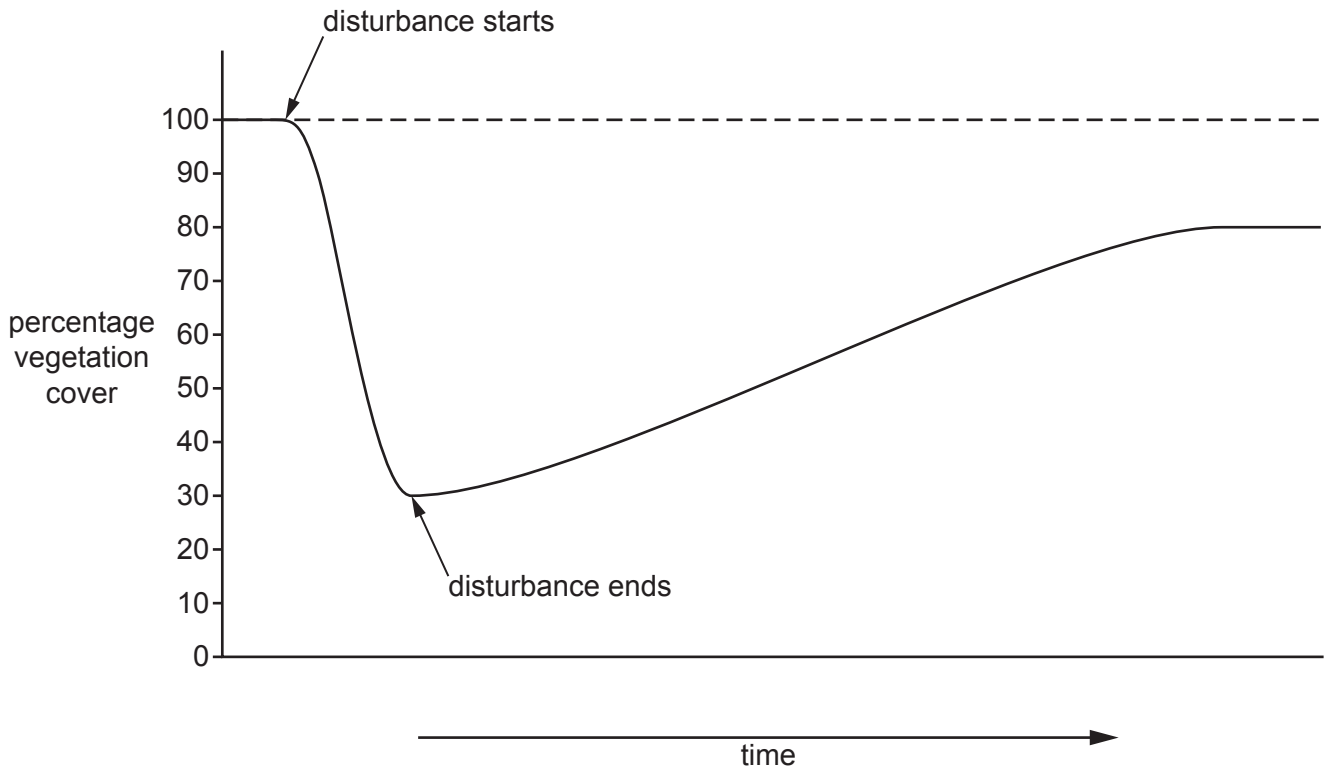
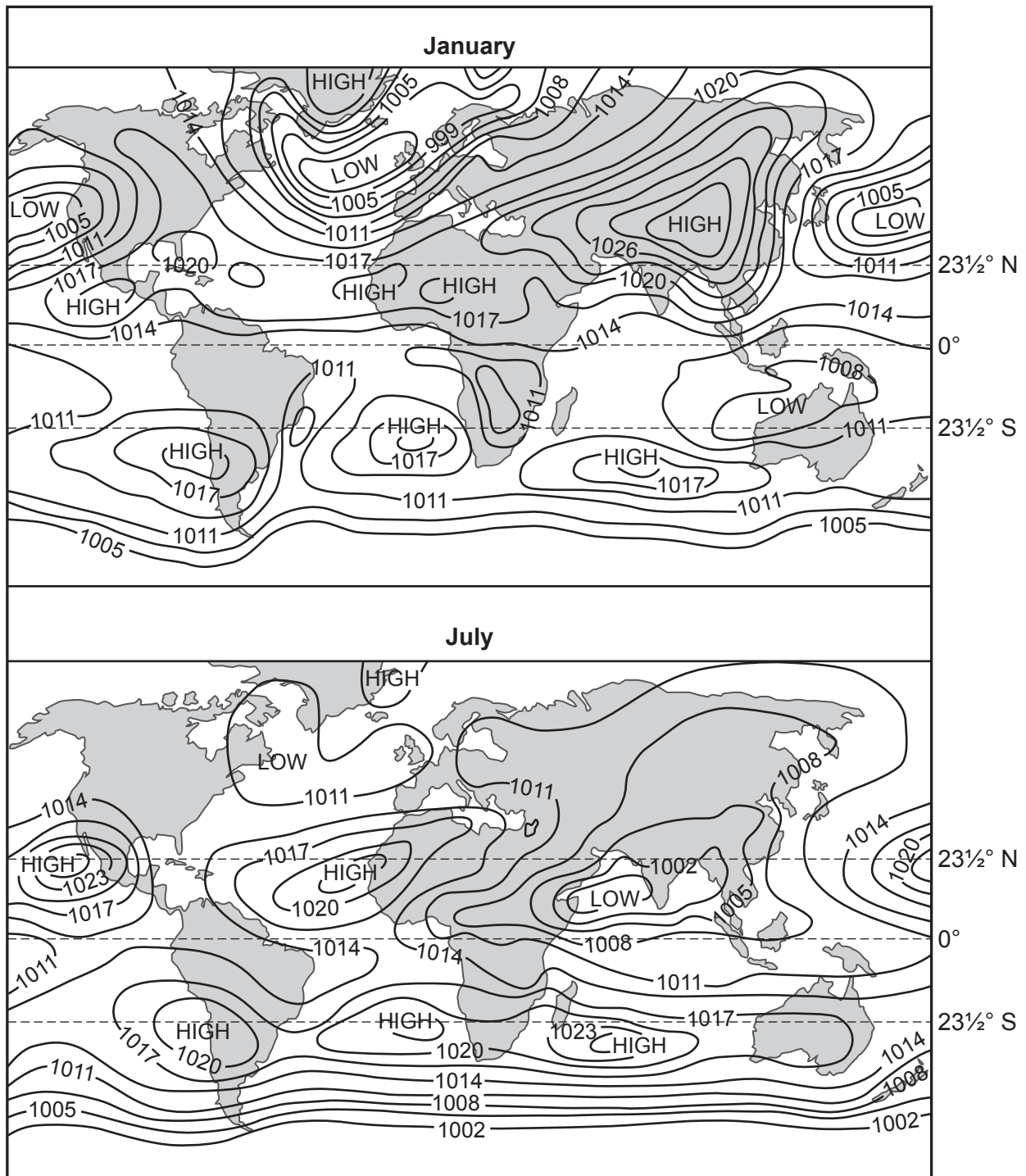


Fig. 6.1 for Question 6

Average surface air pressure for January and July



Key

—1008— isobars at intervals of 3 millibars of pressure
 —1002—

BLANK PAGE

The boundaries and names shown, the designations used and the presentation of material on any maps contained in this question paper/insert do not imply official endorsement or acceptance by Cambridge Assessment International Education concerning the legal status of any country, territory, or area or any of its authorities, or of the delimitation of its frontiers or boundaries.

Permission to reproduce items where third-party owned material protected by copyright is included has been sought and cleared where possible. Every reasonable effort has been made by the publisher (UCLES) to trace copyright holders, but if any items requiring clearance have unwittingly been included, the publisher will be pleased to make amends at the earliest possible opportunity.

To avoid the issue of disclosure of answer-related information to candidates, all copyright acknowledgements are reproduced online in the Cambridge Assessment International Education Copyright Acknowledgements Booklet. This is produced for each series of examinations and is freely available to download at www.cambridgeinternational.org after the live examination series.

Cambridge Assessment International Education is part of Cambridge Assessment. Cambridge Assessment is the brand name of the University of Cambridge Local Examinations Syndicate (UCLES), which is a department of the University of Cambridge.